

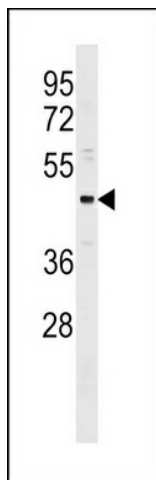
Product datasheet for **TA324627S**

ONECUT3 Rabbit Polyclonal Antibody

Product data:

Product Type:	Primary Antibodies
Applications:	WB
Recommended Dilution:	WB: 1:1000
Reactivity:	Human (Predicted: Mouse)
Host:	Rabbit
Isotype:	IgG
Clonality:	Polyclonal
Immunogen:	This ONECUT3 antibody is generated from rabbits immunized with a KLH conjugated synthetic peptide between 393-419 amino acids from the C-terminal region of human ONECUT3.
Formulation:	Purified polyclonal antibody supplied in PBS with 0.09% (W/V) sodium azide.
Concentration:	lot specific
Purification:	This antibody is purified through a protein A column, followed by peptide affinity purification.
Conjugation:	Unconjugated
Storage:	Store at -20°C as received.
Stability:	Stable for 12 months from date of receipt.
Predicted Protein Size:	50037 Da
Gene Name:	one cut homeobox 3
Database Link:	NP_001073957 Entrez Gene 246086 Mouse Entrez Gene 390874 Human O60422
Synonyms:	OC3
Protein Families:	Druggable Genome

[View online »](#)

Product images:

ONECUT3 Antibody (C-term) (Cat. #[TA324627])
western blot analysis in MDA-MB231 cell line
lysates (35ug/lane). This demonstrates the
ONECUT3 antibody detected the ONECUT3
protein (arrow).