

## Product datasheet for **TA324626S**

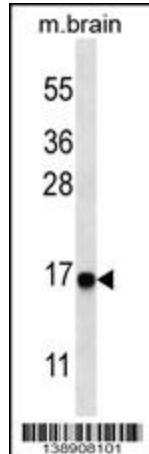
### MAP1LC3A Rabbit Polyclonal Antibody

#### Product data:

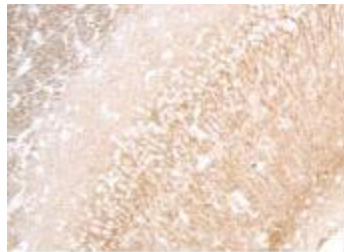
Product Type:	Primary Antibodies
Applications:	IF, IHC, WB
Recommended Dilution:	IF: 1:100, WB: 1:1000, IHC: 1:10~50, ICC: 1:10~50
Reactivity:	Human, Mouse (Predicted: Rat, Bovine)
Host:	Rabbit
Isotype:	IgG
Clonality:	Polyclonal
Immunogen:	This Cleaved LC3A antibody is generated from rabbits immunized with a KLH conjugated synthetic peptide between 89-120 amino acids from human Cleaved LC3A.
Formulation:	Purified polyclonal antibody supplied in PBS with 0.09% (W/V) sodium azide.
Concentration:	lot specific
Purification:	This antibody is purified through a protein A column, followed by peptide affinity purification.
Conjugation:	Unconjugated
Storage:	Store at -20°C as received.
Stability:	Stable for 12 months from date of receipt.
Predicted Protein Size:	14272 Da
Gene Name:	microtubule associated protein 1 light chain 3 alpha
Database Link:	<a href="#">NP_115903</a> <a href="#">Entrez Gene 66734 Mouse</a> <a href="#">Entrez Gene 362245 Rat</a> <a href="#">Entrez Gene 84557 Human</a> <a href="#">Q9H492</a>
Synonyms:	ATG8E; LC3; LC3A; MAP1ALC3; MAP1BLC3



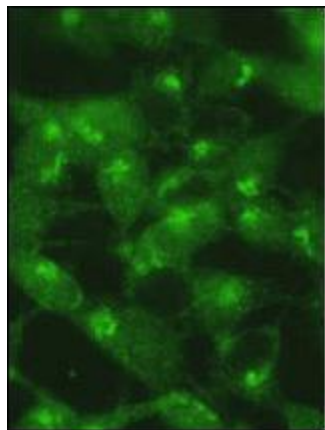
[View online »](#)

**Product images:**

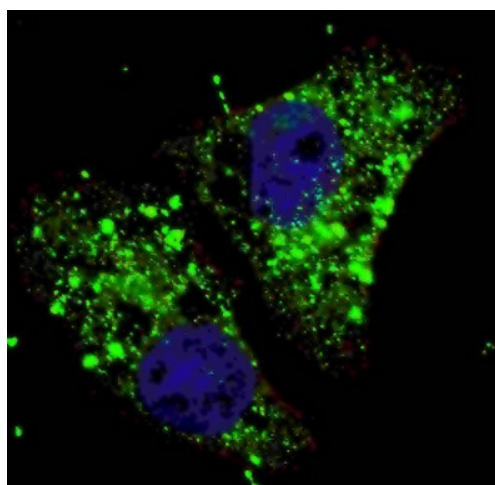
Western blot analysis of anti-cleaved-LC3 (APG8a) Pab (Cat. #[TA324626]) in mouse brain tissue lysate. Cleaved-LC3 (APG8a) was detected using the purified Pab.



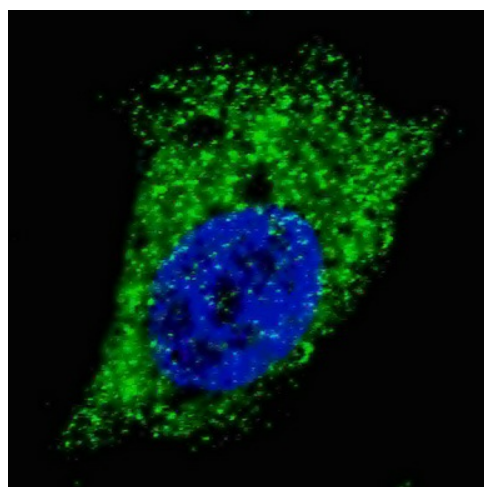
Formalin-fixed and paraffin-embedded human cancer tissue reacted with the primary antibody, which was peroxidase-conjugated to the secondary antibody, followed by DAB staining. This data demonstrates the use of this antibody for immunohistochemistry; clinical relevance has not been evaluated. BC = breast carcinoma; HC = hepatocarcinoma.



5Y cells were pretreated with 5nM bafilomycin for 24hr and fixed in 4% of paraformaldehyde. Treatment with Cat# [TA324626] antibody at dilution 1:100. Data courtesy of Jianhui Zhu, MD, PhD & Charleen T. Chu, MD, PhD, University of Pittsburgh School of Medicine.



IF image of U251 cells stained with cleaved LC3A antibody. U251 cells were treated with Chloroquine, then incubated with [TA324626] cleaved LC3A primary antibody (1:100, 2 h at RT). For secondary antibody, Alexa Fluor® 488 conjugated donkey anti-rabbit antibody (green) was used (1:1000, 1h). Nuclei were counterstained with Hoechst 33342 (blue). LC3 immunoreactivity is localized to autophagic vacuoles in the cytoplasm of U251 cells.



IF image of U251 cells stained with cleaved LC3A antibody. U251 cells were incubated with [TA324626] cleaved LC3A primary antibody (1:100, 2 h at RT). For secondary antibody, Alexa Fluor® 488 conjugated donkey anti-rabbit antibody (green) was used (1:1000, 1h). Nuclei were counterstained with Hoechst 33342 (blue). LC3 immunoreactivity is localized to autophagic vacuoles in the cytoplasm of U251 cells.