

Product datasheet for **TA324625S**

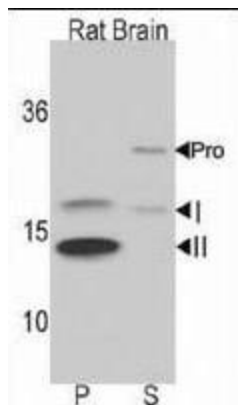
LC3B (MAP1LC3B) Rabbit Polyclonal Antibody

Product data:

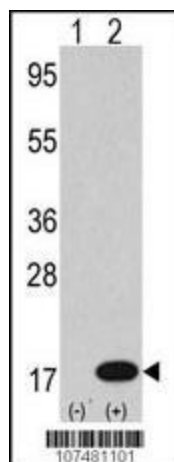
Product Type:	Primary Antibodies
Applications:	IF, IHC, WB
Recommended Dilution:	WB: 1:1000, IF: 1:100, IHC: 1:50~100
Reactivity:	Human, Rat (Predicted: Bovine)
Host:	Rabbit
Isotype:	IgG
Clonality:	Polyclonal
Immunogen:	This LC3 antibody is generated from rabbits immunized with a KLH conjugated synthetic peptide between 1-30 amino acids from the N-terminal region of human LC3.
Formulation:	Purified polyclonal antibody supplied in PBS with 0.09% (W/V) sodium azide.
Concentration:	lot specific
Purification:	This antibody is prepared by Saturated Ammonium Sulfate (SAS) precipitation followed by dialysis against PBS.
Conjugation:	Unconjugated
Storage:	Store at -20°C as received.
Stability:	Stable for 12 months from date of receipt.
Predicted Protein Size:	14688 Da
Gene Name:	microtubule associated protein 1 light chain 3 beta
Database Link:	NP_073729 Entrez Gene 64862 Rat Entrez Gene 81631 Human Q9GZQ8
Synonyms:	1BLC3; ATG8F; LC3B; MAP1A; MAP1LC3B-a



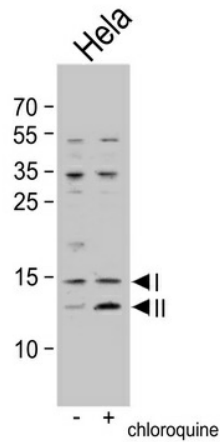
[View online »](#)

Product images:


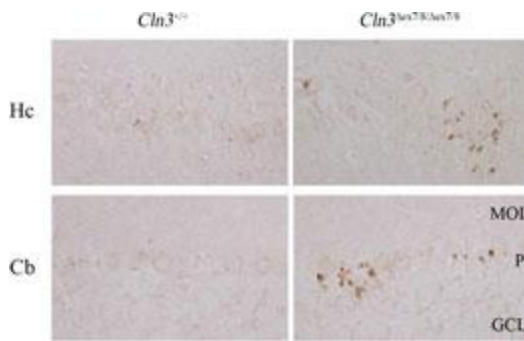
Western blot analysis of anti-LC3 (APG8b) Pab (Cat. #[TA324625]) in rat brain lysate. Both non-lipidated (arrow, I) and lipidated LC3 (APG8b) (arrow, II) were detected in membrane fraction (P) but pro-LC3 (APG8b) and non-lipidated LC3 (APG8b) were detected in soluble fraction (S).



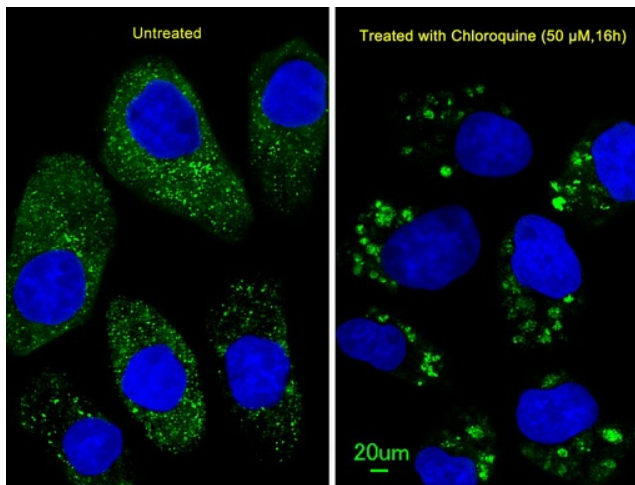
Western blot analysis of anti-LC3 (APG8b) Pab (Cat. #[TA324625]) in 293 cell line lysates transiently transfected with the LC3 (APG8b) gene (2ug/lane). Human LC3 (APG8b) (arrow) was detected using the purified Pab.



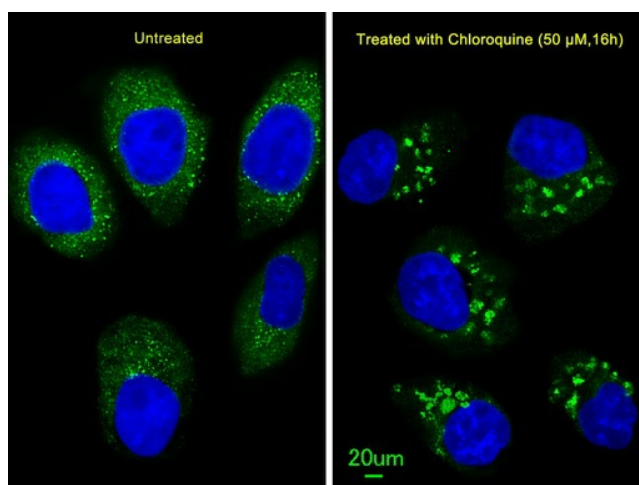
Western blot analysis of anti-LC3 (APG8b) in untreated or treated HeLa cell lysate. Both non-lipidated (arrow, I) and lipidated LC3 (APG8b) (arrow, II) were detected in but pro-LC3 (APG8b) and non-lipidated LC3 (APG8b) were detected in soluble fraction (S).



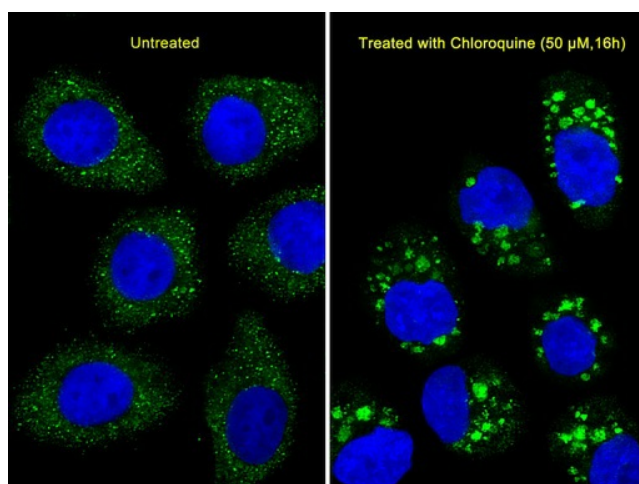
Wild-type (Cln3+/+) or homozygous Cln3 paraffin-embedded brain sections immunostained for the LC3 protein (Cat.# [TA324625] LC3 antibody). Shown are the CA2/CA3 region of hippocampus (Hc) and cerebellum (Cb) from 10-month-old mice. Few immunopositive puncta are present in wild-type sections, whereas homozygous Cln3 sections contain clusters of LC3-positive puncta around pyramidal neurons and Purkinje cells (P). MOL, molecular layer; GCL, granule cell layer.



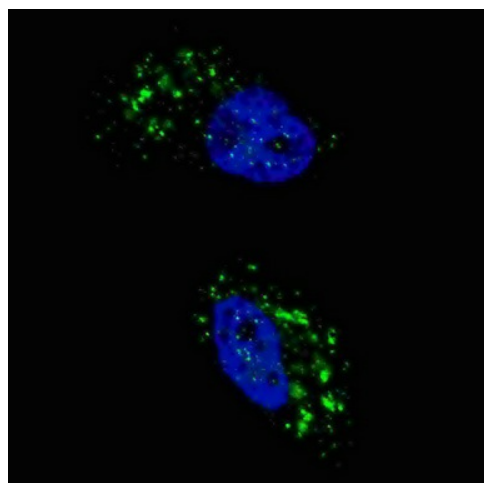
Immunofluorescent analysis of U251 cells, using LC3 Antibody (APG8B) (N-term) (Cat. # [TA324625]). U251 cells (right) were treated with Chloroquine (50 μM, 16h). [TA324625] was diluted at 1:25 dilution. Alexa Fluor 488-conjugated goat anti-rabbit IgG at 1:400 dilution was used as the secondary antibody (green). DAPI was used to stain the cell nuclear (blue).



Immunofluorescent analysis of U251 cells, using LC3 Antibody (APG8B) (N-term) (Cat. # [TA324625]). U251 cells (right) were treated with Chloroquine (50 μ M, 16h). [TA324625] was diluted at 1:100 dilution. Alexa Fluor 488-conjugated goat anti-rabbit IgG at 1:400 dilution was used as the secondary antibody (green). DAPI was used to stain the cell nuclear (blue).



Immunofluorescent analysis of U251 cells, using LC3 Antibody (APG8B) (N-term) (Cat. # [TA324625]). U251 cells (right) were treated with Chloroquine (50 μ M, 16h). [TA324625] was diluted at 1:25 dilution. Alexa Fluor 488-conjugated goat anti-rabbit IgG at 1:400 dilution was used as the secondary antibody (green). DAPI was used to stain the cell nuclear (blue).



IF image of U251 cells stained with LC3 (APG8B) (N-term) antibody. U251 cells were treated with Chloroquine, then incubated with AP1801i LC3 (Isoform B Specific) primary antibody (1:100, 2 h at RT). For secondary antibody, Alexa Fluor® 488 conjugated donkey anti-rabbit antibody (green) was used (1:1000, 1h). Nuclei were counterstained with Hoechst 33342 (blue). LC3 immunoreactivity is localized to autophagic vacuoles in the cytoplasm of U251 cells.