

Product datasheet for TA324624S

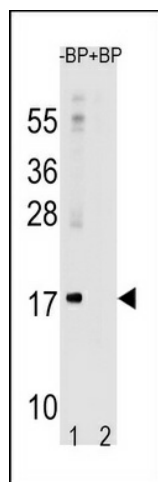
MAP1LC3A Rabbit Polyclonal Antibody

Product data:

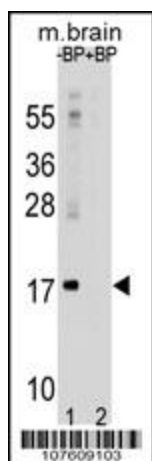
Product Type:	Primary Antibodies
Applications:	IF, IHC, WB
Recommended Dilution:	WB: 1:1000, IF: 1:200, IHC: 1:50~100
Reactivity:	Human, Mouse, Rat
Host:	Rabbit
Isotype:	IgG
Clonality:	Polyclonal
Immunogen:	This LC3 antibody is generated from rabbits immunized with a KLH conjugated synthetic peptide between 1~30 amino acids from the N-term of human LC3 (APG8a).
Formulation:	Purified polyclonal antibody supplied in PBS with 0.09% (W/V) sodium azide.
Concentration:	lot specific
Purification:	This antibody is prepared by Saturated Ammonium Sulfate (SAS) precipitation followed by dialysis against PBS.
Conjugation:	Unconjugated
Storage:	Store at -20°C as received.
Stability:	Stable for 12 months from date of receipt.
Predicted Protein Size:	14272 Da
Gene Name:	microtubule associated protein 1 light chain 3 alpha
Database Link:	NP_115903 Entrez Gene 66734 Mouse Entrez Gene 362245 Rat Entrez Gene 84557 Human Q9H492
Synonyms:	ATG8E; LC3; LC3A; MAP1ALC3; MAP1BLC3


[View online »](#)

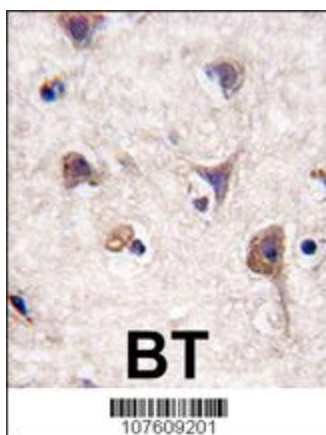
Product images:



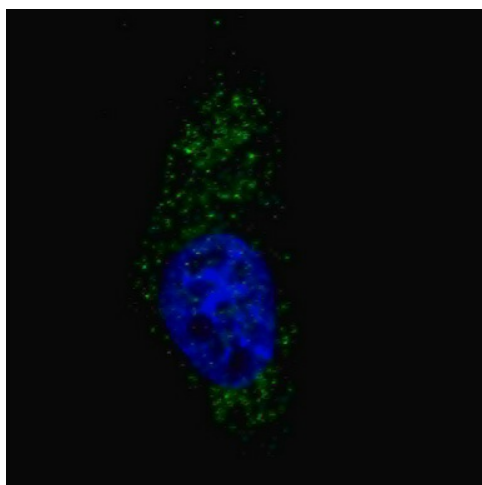
Western blot analysis of anti-LC3 (APG8a) Pab (Cat. #TA324624) in rat brain lysate. Both lipidated (arrow, II) and non-lipidated APG8a (arrow, I) were detected in membrane fraction (P) but only non-lipidated LC3 was detected in soluble fraction (S).



APG8a (MAP1LC3A) Antibody (M1) (Cat. #TA324624) western blot analysis in mouse brain tissue lysates (35ug/lane). This demonstrates the APG8a (MAP1LC3A) antibody detected the APG8a (MAP1LC3A) protein (arrow).



Formalin-fixed and paraffin-embedded human brain tissue reacted with Autophagy LC3 Antibody (APG8a) (N-term), which was peroxidase-conjugated to the secondary antibody, followed by DAB staining. This data demonstrates the use of this antibody for immunohistochemistry; clinical relevance has not been evaluated.



IF image of U251 cells stained with [TA324624] LC3 (APG8A) (N-term) antibody. U251 cells were treated with Chloroquine, then incubated with [TA324624] LC3 (APG8A) (N-term) primary antibody (1:200, 2 h at RT). For secondary antibody, Alexa Fluor® 488 conjugated donkey anti-rabbit antibody (green) was used (1:1000, 1h). Nuclei were counterstained with Hoechst 33342 (blue). LC3 immunoreactivity is localized to autophagic vacuoles in the cytoplasm of U251 cells.