

Product datasheet for **TA324622S**

nkx6.3 (NKX6-3) Rabbit Polyclonal Antibody

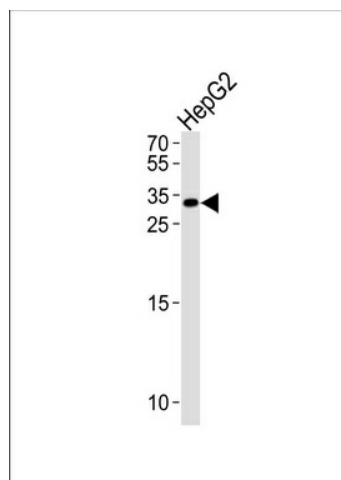
Product data:

Product Type:	Primary Antibodies
Applications:	WB
Recommended Dilution:	WB: 1:1000
Reactivity:	Human (Predicted: Mouse)
Host:	Rabbit
Isotype:	IgG
Clonality:	Polyclonal
Immunogen:	This NKX6-3 antibody is generated from rabbits immunized with a KLH conjugated synthetic peptide between 83-109 amino acids from the Central region of human NKX6-3.
Formulation:	Purified polyclonal antibody supplied in PBS with 0.09% (W/V) sodium azide.
Concentration:	lot specific
Purification:	This antibody is purified through a protein A column, followed by peptide affinity purification.
Conjugation:	Unconjugated
Storage:	Store at -20°C as received.
Stability:	Stable for 12 months from date of receipt.
Predicted Protein Size:	28948 Da
Gene Name:	NK6 homeobox 3
Database Link:	NP_689781 Entrez Gene 74561 Mouse Entrez Gene 157848 Human A6NJ46
Synonyms:	NKX6.3



[View online »](#)

Product images:



NKX6-3 Antibody (Center) (Cat. #[TA324622]) western blot analysis in HepG2 cell line lysates (35ug/lane). This demonstrates the NKX6-3 antibody detected the NKX6-3 protein (arrow).