

## Product datasheet for **TA324621S**

### **BAPX1 (NKX3-2) Rabbit Polyclonal Antibody**

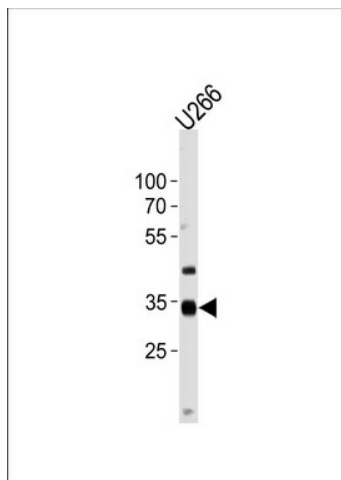
#### **Product data:**

Product Type:	Primary Antibodies
Applications:	WB
Recommended Dilution:	WB: 1:1000
Reactivity:	Human (Predicted: Mouse, Xenopus)
Host:	Rabbit
Isotype:	IgG
Clonality:	Polyclonal
Immunogen:	This NKX3-2 antibody is generated from rabbits immunized with a KLH conjugated synthetic peptide between 208-235 amino acids from the Central region of human NKX3-2.
Formulation:	Purified polyclonal antibody supplied in PBS with 0.09% (W/V) sodium azide.
Concentration:	lot specific
Purification:	This antibody is purified through a protein A column, followed by peptide affinity purification.
Conjugation:	Unconjugated
Storage:	Store at -20°C as received.
Stability:	Stable for 12 months from date of receipt.
Predicted Protein Size:	34814 Da
Gene Name:	NK3 homeobox 2
Database Link:	<a href="#">NP_001180</a> <a href="#">Entrez Gene 12020 Mouse</a> <a href="#">Entrez Gene 579 Human</a> <a href="#">P78367</a>
Synonyms:	BAPX1; NKX3.2; NKX3B; SMMD



[View online »](#)

**Product images:**



NKX3-2 Antibody (Center) (Cat. #TA324621S) western blot analysis in U266 cell line lysates (35ug/lane). This demonstrates the NKX3-2 antibody detected the NKX3-2 protein (arrow).