

## Product datasheet for **TA324620**

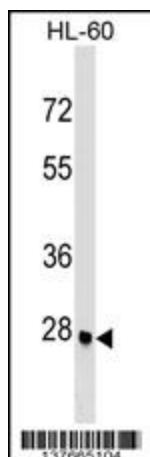
### ARGFX Rabbit Polyclonal Antibody

#### Product data:

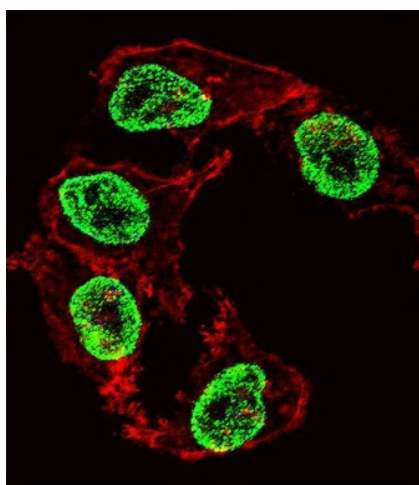
Product Type:	Primary Antibodies
Applications:	IF, WB
Recommended Dilution:	WB: 1:1000, IF: 1:10~50
Reactivity:	Human
Host:	Rabbit
Isotype:	IgG
Clonality:	Polyclonal
Immunogen:	This ARGFX antibody is generated from rabbits immunized with a KLH conjugated synthetic peptide between 103-132 amino acids from the Central region of human ARGFX.
Formulation:	Purified polyclonal antibody supplied in PBS with 0.09% (W/V) sodium azide.
Concentration:	lot specific
Purification:	This antibody is purified through a protein A column, followed by peptide affinity purification.
Conjugation:	Unconjugated
Storage:	Store at -20°C as received.
Stability:	Stable for 12 months from date of receipt.
Predicted Protein Size:	35617 Da
Gene Name:	arginine-fifty homeobox
Database Link:	<a href="#">NP_001012677</a> <a href="#">Entrez Gene 503582 Human</a> <a href="#">A6NJJG6</a>
Synonyms:	ARGFX
Protein Families:	Transcription Factors



[View online »](#)

**Product images:**

ARGFX Antibody (Center) (Cat. #TA324620) western blot analysis in HL-60 cell line lysates (35ug/lane). This demonstrates the ARGFX antibody detected the ARGFX protein (arrow).



IF image of HepG2 cell stained with ARGFX Antibody (Center) (Cat#TA324620). HepG2 cells were incubated with ARGFX primary antibody (1:25, 1 h at 37°C). For secondary antibody, Alexa Fluor® 488 conjugated donkey anti-rabbit antibody (green) was used (1:400). Cytoplasmic actin was counterstained with Alexa Fluor® 555 (red) conjugated Phalloidin (7 units/ml). Nuclei were counterstained with DAPI (blue). ARGFX immunoreactivity is localized to Nucleus significantly.