

Product datasheet for **TA324617S**

RBPJK (RBPJ) Rabbit Polyclonal Antibody

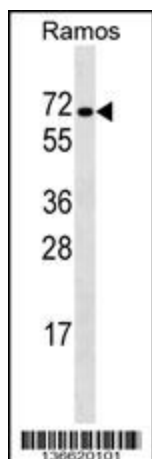
Product data:

Product Type:	Primary Antibodies
Applications:	IF, IHC, WB
Recommended Dilution:	WB: 1:1000, IHC: 1:10~50, IF: 1:10~50
Reactivity:	Human
Host:	Rabbit
Isotype:	IgG
Clonality:	Polyclonal
Immunogen:	This RBPJ antibody is generated from rabbits immunized with a KLH conjugated synthetic peptide between 1-29 amino acids from the N-terminal region of human RBPJ.
Formulation:	Purified polyclonal antibody supplied in PBS with 0.09% (W/V) sodium azide.
Concentration:	lot specific
Purification:	This antibody is purified through a protein A column, followed by peptide affinity purification.
Conjugation:	Unconjugated
Storage:	Store at -20°C as received.
Stability:	Stable for 12 months from date of receipt.
Predicted Protein Size:	55637 Da
Gene Name:	recombination signal binding protein for immunoglobulin kappa J region
Database Link:	NP_005340 Entrez Gene 3516 Human Q06330
Synonyms:	AOS3; CBF1; csl; IGKJRB; IGKJRB1; KBF2; RBP-J; RBPJK; RBPSUH; SUH
Protein Families:	Transcription Factors
Protein Pathways:	Notch signaling pathway

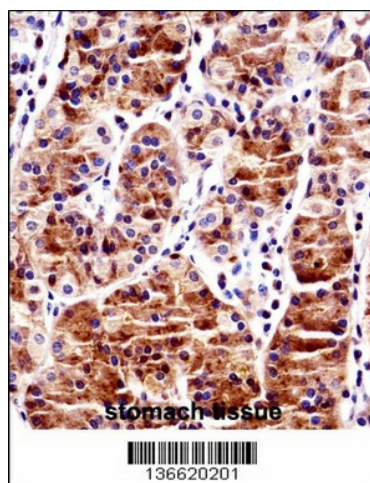


[View online »](#)

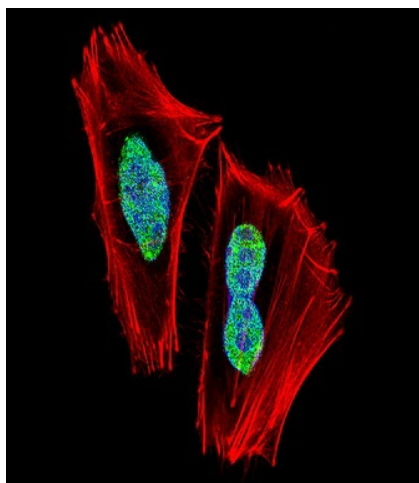
Product images:



RBPJ Antibody (N-term) (Cat. #TA324617S) western blot analysis in Ramos cell line lysates (35ug/lane). This demonstrates the RBPJ antibody detected the RBPJ protein (arrow).



RBPJ Antibody (N-term) ([TA324617S]) immunohistochemistry analysis in formalin fixed and paraffin embedded human stomach tissue followed by peroxidase conjugation of the secondary antibody and DAB staining. This data demonstrates the use of RBPJ Antibody (N-term) for immunohistochemistry. Clinical relevance has not been evaluated.



IF image of A2058 cell stained with RBPJ Antibody (N-term) (Cat#[TA324617]). A2058 cells were incubated with RBPJ primary antibody (1:25, 1 h at 37°C). For secondary antibody, Alexa Fluor® 488 conjugated donkey anti-rabbit antibody (green) was used (1:400). Cytoplasmic actin was counterstained with Alexa Fluor® 555 (red) conjugated Phalloidin (7 units/ml). Nuclei were counterstained with DAPI (blue). RBPJ immunoreactivity is localized to nucleus significantly.