

Product datasheet for **TA324616**

Transcription factor 25 (TCF25) Rabbit Polyclonal Antibody

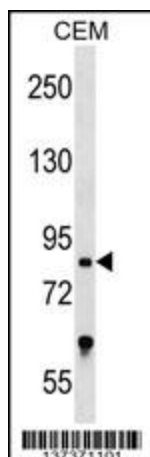
Product data:

Product Type:	Primary Antibodies
Applications:	IF, WB
Recommended Dilution:	IF: 1:10~50, WB: 1:1000
Reactivity:	Human (Predicted: Mouse)
Host:	Rabbit
Isotype:	IgG
Clonality:	Polyclonal
Immunogen:	This TCF25 antibody is generated from rabbits immunized with a KLH conjugated synthetic peptide between 186-215 amino acids from the N-terminal region of human TCF25.
Formulation:	Purified polyclonal antibody supplied in PBS with 0.09% (W/V) sodium azide.
Concentration:	lot specific
Purification:	This antibody is purified through a protein A column, followed by peptide affinity purification.
Conjugation:	Unconjugated
Storage:	Store at -20°C as received.
Stability:	Stable for 12 months from date of receipt.
Predicted Protein Size:	76667 Da
Gene Name:	transcription factor 25
Database Link:	NP_055787 Entrez Gene 66855 Mouse Entrez Gene 22980 Human Q9BQ70
Synonyms:	FKSG26; hKIAA1049; Hulp1; NULP1; PRO2620

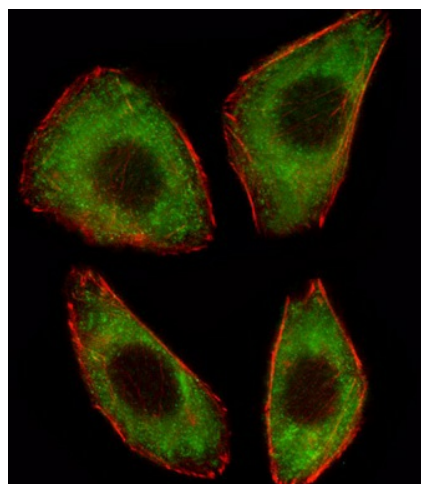


[View online »](#)

Product images:



TCF25 Antibody (N-term) (Cat. #TA324616) western blot analysis in CEM cell line lysates (35ug/lane). This demonstrates the TCF25 antibody detected the TCF25 protein (arrow).



IF image of A549 cell stained with TCF25 Antibody (N-term) (Cat#TA324616). A549 cells were incubated with TCF25 primary antibody (1:25, 1 h at 37°C). For secondary antibody, Alexa Fluor® 488 conjugated donkey anti-rabbit antibody (green) was used (1:400). Cytoplasmic actin was counterstained with Alexa Fluor® 555 (red) conjugated Phalloidin (7 units/ml). TCF25 immunoreactivity is localized to Cytoplasm significantly.