

Product datasheet for **TA324614**

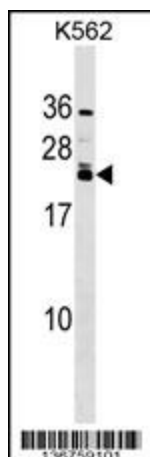
HAND2 Rabbit Polyclonal Antibody

Product data:

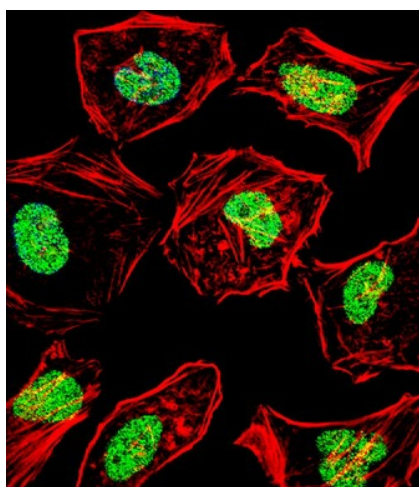
Product Type:	Primary Antibodies
Applications:	IF, WB
Recommended Dilution:	IF: 1:10~50, WB: 1:1000
Reactivity:	Human (Predicted: Mouse, Rat, Chicken, Xenopus)
Host:	Rabbit
Isotype:	IgG
Clonality:	Polyclonal
Immunogen:	This HAND2 antibody is generated from rabbits immunized with a KLH conjugated synthetic peptide between 81-110 amino acids from the Central region of human HAND2.
Formulation:	Purified polyclonal antibody supplied in PBS with 0.09% (W/V) sodium azide.
Concentration:	lot specific
Purification:	This antibody is purified through a protein A column, followed by peptide affinity purification.
Conjugation:	Unconjugated
Storage:	Store at -20°C as received.
Stability:	Stable for 12 months from date of receipt.
Predicted Protein Size:	23666 Da
Gene Name:	heart and neural crest derivatives expressed 2
Database Link:	NP_068808 Entrez Gene 15111 Mouse Entrez Gene 64637 Rat Entrez Gene 9464 Human P61296
Synonyms:	bHLHa26; dHand; DHAND2; Hed; Thing2
Protein Families:	Druggable Genome



[View online »](#)

Product images:

HAND2 Antibody (Center) (Cat. #TA324614) western blot analysis in K562 cell line lysates (35ug/lane). This demonstrates the HAND2 antibody detected the HAND2 protein (arrow).



IF image of HeLa cell stained with HAND2 Antibody (Center) (Cat#TA324614). HeLa cells were incubated with HAND2 primary antibody (1:25, 1 h at 37°C). For secondary antibody, Alexa Fluor® 488 conjugated donkey anti-rabbit antibody (green) was used (1:400). Cytoplasmic actin was counterstained with Alexa Fluor® 555 (red) conjugated Phalloidin (7 units/ml). Nuclei were counterstained with DAPI (blue). HAND2 immunoreactivity is localized to Nucleus significantly.