

Product datasheet for **TA324612**

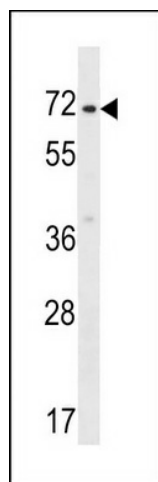
ZNF155 Rabbit Polyclonal Antibody

Product data:

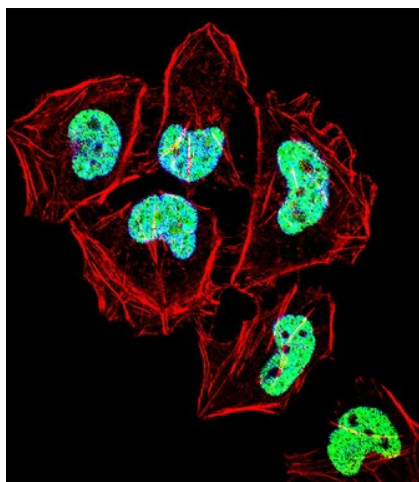
Product Type:	Primary Antibodies
Applications:	IF, WB
Recommended Dilution:	WB: 1:1000, IF: 1:10~50
Reactivity:	Human
Host:	Rabbit
Isotype:	IgG
Clonality:	Polyclonal
Immunogen:	This ZNF155 antibody is generated from rabbits immunized with a KLH conjugated synthetic peptide between 480-509 amino acids from the C-terminal region of human ZNF155.
Formulation:	Purified polyclonal antibody supplied in PBS with 0.09% (W/V) sodium azide.
Concentration:	lot specific
Purification:	This antibody is purified through a protein A column, followed by peptide affinity purification.
Conjugation:	Unconjugated
Storage:	Store at -20°C as received.
Stability:	Stable for 12 months from date of receipt.
Predicted Protein Size:	62081 Da
Gene Name:	zinc finger protein 155
Database Link:	NP_932355 Entrez Gene 7711 Human Q12901
Synonyms:	pHZ-96
Protein Families:	Transcription Factors



[View online »](#)

Product images:

ZNF155 Antibody (C-term) (Cat. #TA324612) western blot analysis in HepG2 cell line lysates (35ug/lane). This demonstrates the ZNF155 antibody detected the ZNF155 protein (arrow).



IF image of HeLa cell stained with ZNF155 Antibody (C-term) (Cat#TA324612). HeLa cells were incubated with ZNF155 primary antibody (1:25, 1 h at 37°C). For secondary antibody, Alexa Fluor® 488 conjugated donkey anti-rabbit antibody (green) was used (1:400). Cytoplasmic actin was counterstained with Alexa Fluor® 555 (red) conjugated Phalloidin (7 units/ml). Nuclei were counterstained with DAPI (blue). ZNF155 immunoreactivity is localized to Nucleus significantly.