

Product datasheet for **TA324611S**

Securin 2 (PTTG2) Rabbit Polyclonal Antibody

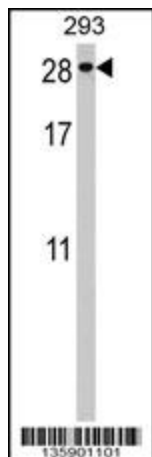
Product data:

Product Type:	Primary Antibodies
Applications:	IF, WB
Recommended Dilution:	WB: 1:1000, IF: 1:10~50
Reactivity:	Human
Host:	Rabbit
Isotype:	IgG
Clonality:	Polyclonal
Immunogen:	This PTTG2 antibody is generated from rabbits immunized with a KLH conjugated synthetic peptide between 56-84 amino acids from the Central region of human PTTG2.
Formulation:	Purified polyclonal antibody supplied in PBS with 0.09% (W/V) sodium azide.
Concentration:	lot specific
Purification:	This antibody is purified through a protein A column, followed by peptide affinity purification.
Conjugation:	Unconjugated
Storage:	Store at -20°C as received.
Stability:	Stable for 12 months from date of receipt.
Predicted Protein Size:	22302 Da
Gene Name:	pituitary tumor-transforming 2
Database Link:	NP_006598 Entrez Gene 10744 Human Q9NZH5
Synonyms:	PTTG2
Protein Families:	Druggable Genome
Protein Pathways:	Cell cycle, Oocyte meiosis

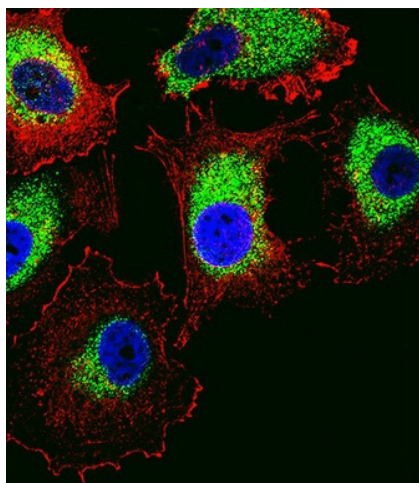


[View online »](#)

Product images:



PTTG2 Antibody (Center) (Cat. #TA324611]) western blot analysis in 293 cell line lysates (35ug/lane). This demonstrates the PTTG2 antibody detected the PTTG2 protein (arrow).



IF image of MCF-7 cell stained with PTTG2 Antibody (Center) (Cat#[TA324611]). MCF-7 cells were incubated with PTTG2 primary antibody (1:25, 1 h at 37°C). For secondary antibody, Alexa Fluor® 488 conjugated donkey anti-rabbit antibody (green) was used (1:400). Cytoplasmic actin was counterstained with Alexa Fluor® 555 (red) conjugated Phalloidin (7 units/ml). Nuclei were counterstained with DAPI (blue). PTTG2 immunoreactivity is localized to Cytoplasm significantly.