

Product datasheet for **TA324609S**

HDAC1 Rabbit Polyclonal Antibody

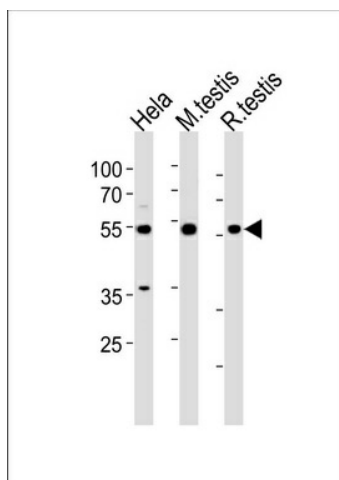
Product data:

Product Type:	Primary Antibodies
Applications:	IF, WB
Recommended Dilution:	WB: 1:1000, IF: 1:10~50
Reactivity:	Human, Mouse, Rat
Host:	Rabbit
Isotype:	IgG
Clonality:	Polyclonal
Immunogen:	This HDAC1 antibody is generated from rabbits immunized with a KLH conjugated synthetic peptide between 402-430 amino acids from the Central region of human HDAC1.
Formulation:	Purified polyclonal antibody supplied in PBS with 0.09% (W/V) sodium azide.
Concentration:	lot specific
Purification:	This antibody is purified through a protein A column, followed by peptide affinity purification.
Conjugation:	Unconjugated
Storage:	Store at -20°C as received.
Stability:	Stable for 12 months from date of receipt.
Predicted Protein Size:	55103 Da
Gene Name:	histone deacetylase 1
Database Link:	NP_004955 Entrez Gene 297893 RatEntrez Gene 433759 MouseEntrez Gene 3065 Human Q13547
Synonyms:	GON-10; HD1; RPD3; RPD3L1
Protein Families:	Adult stem cells, Druggable Genome, Stem cell - Pluripotency, Stem cell relevant signaling - DSL/Notch pathway, Transcription Factors
Protein Pathways:	Cell cycle, Chronic myeloid leukemia, Huntington's disease, Notch signaling pathway, Pathways in cancer

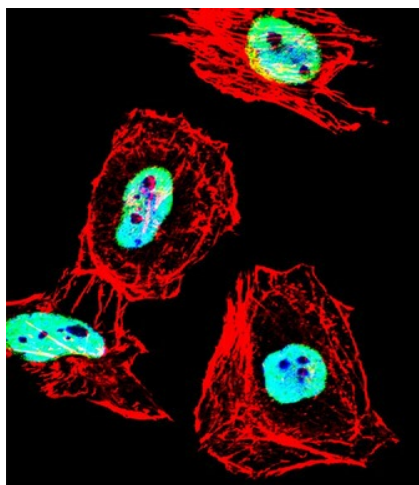


[View online »](#)

Product images:



HDAC1 Antibody (S423) (Cat. #[TA324609]) western blot analysis in HeLa cell line and mouse testis, rat testis tissue lysates (35ug/lane). This demonstrates the HDAC1 antibody detected the HDAC1 protein (arrow).



IF image of HeLa cell stained with HDAC1 Antibody (Center S423) (Cat#[TA324609]). HeLa cells were incubated with HDAC1 primary antibody (1:25, 1 h at 37°C). For secondary antibody, Alexa Fluor® 488 conjugated donkey anti-rabbit antibody (green) was used (1:400). Cytoplasmic actin was counterstained with Alexa Fluor® 555 (red) conjugated Phalloidin (7 units/ml). Nuclei were counterstained with DAPI (blue). HDAC1 immunoreactivity is localized to Nucleus significantly.