

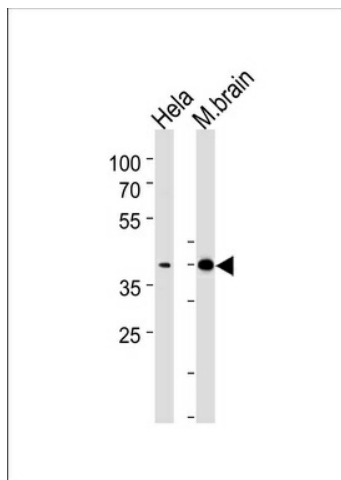
## Product datasheet for TA324608S

### ATF2 Rabbit Polyclonal Antibody

#### Product data:

Product Type:	Primary Antibodies
Applications:	WB
Recommended Dilution:	WB: 1:1000
Reactivity:	Human, Mouse
Host:	Rabbit
Isotype:	IgG
Clonality:	Polyclonal
Immunogen:	This ATF2 antibody is generated from rabbits immunized with a KLH conjugated synthetic peptide between 318-347 amino acids from the Central region of human ATF2.
Formulation:	Purified polyclonal antibody supplied in PBS with 0.09% (W/V) sodium azide.
Concentration:	lot specific
Purification:	This antibody is purified through a protein A column, followed by peptide affinity purification.
Conjugation:	Unconjugated
Storage:	Store at -20°C as received.
Stability:	Stable for 12 months from date of receipt.
Predicted Protein Size:	54537 Da
Gene Name:	activating transcription factor 2
Database Link:	<a href="#">NP_001871</a> <a href="#">Entrez Gene 11909 Mouse</a> <a href="#">Entrez Gene 1386 Human</a> <a href="#">P15336</a>
Synonyms:	CRE-BP1; CREB-2; CREB2; HB16; TREB7
Protein Families:	Druggable Genome, Transcription Factors
Protein Pathways:	MAPK signaling pathway


[View online »](#)

**Product images:**

ATF2 Antibody (pT339) (Cat. #TA324608J)  
western blot analysis in HeLa cell line and mouse  
brain tissue lysates (35ug/lane). This  
demonstrates the ATF2 antibody detected the  
ATF2 protein (arrow).