

Product datasheet for **TA324607S**

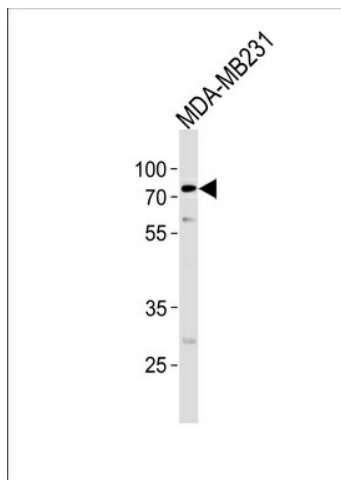
TRIM25 Rabbit Polyclonal Antibody

Product data:

Product Type:	Primary Antibodies
Applications:	WB
Recommended Dilution:	WB: 1:1000
Reactivity:	Human
Host:	Rabbit
Isotype:	IgG
Clonality:	Polyclonal
Immunogen:	This TRIM25 antibody is generated from rabbits immunized with a KLH conjugated synthetic peptide between 277-306 amino acids from the Central region of human TRIM25.
Formulation:	Purified polyclonal antibody supplied in PBS with 0.09% (W/V) sodium azide.
Concentration:	lot specific
Purification:	This antibody is purified through a protein A column, followed by peptide affinity purification.
Conjugation:	Unconjugated
Storage:	Store at -20°C as received.
Stability:	Stable for 12 months from date of receipt.
Predicted Protein Size:	70973 Da
Gene Name:	tripartite motif containing 25
Database Link:	NP_005073 Entrez Gene 7706 Human Q14258
Synonyms:	EFP; RNF147; Z147; ZNF147
Protein Families:	Druggable Genome, Transcription Factors
Protein Pathways:	RIG-I-like receptor signaling pathway



[View online »](#)

Product images:

TRIM25 Antibody (Center) (Cat. #TA324607S)
western blot analysis in MDA-MB231 cell line
lysates (35ug/lane). This demonstrates the TRIM25
antibody detected the TRIM25 protein (arrow).