

Product datasheet for **TA324606**

Calcipressin 1 (RCAN1) Rabbit Polyclonal Antibody

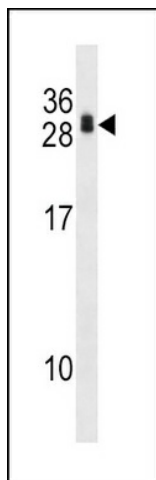
Product data:

Product Type:	Primary Antibodies
Applications:	IF, WB
Recommended Dilution:	WB: 1:1000, IF: 1:10~50
Reactivity:	Human (Predicted: Mouse)
Host:	Rabbit
Isotype:	IgG
Clonality:	Polyclonal
Immunogen:	This RCAN1 antibody is generated from rabbits immunized with a KLH conjugated synthetic peptide between 41-68 amino acids from the N-terminal region of human RCAN1.
Formulation:	Purified polyclonal antibody supplied in PBS with 0.09% (W/V) sodium azide.
Concentration:	lot specific
Purification:	This antibody is purified through a protein A column, followed by peptide affinity purification.
Conjugation:	Unconjugated
Storage:	Store at -20°C as received.
Stability:	Stable for 12 months from date of receipt.
Predicted Protein Size:	28079 Da
Gene Name:	regulator of calcineurin 1
Database Link:	NP_004405 Entrez Gene 54720 Mouse Entrez Gene 1827 Human P53805
Synonyms:	ADAPT78; CSP1; DSC1; DSCR1; MCIP1; RCN1
Protein Families:	Transcription Factors

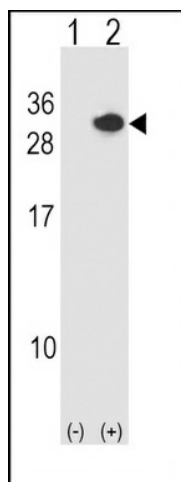


[View online »](#)

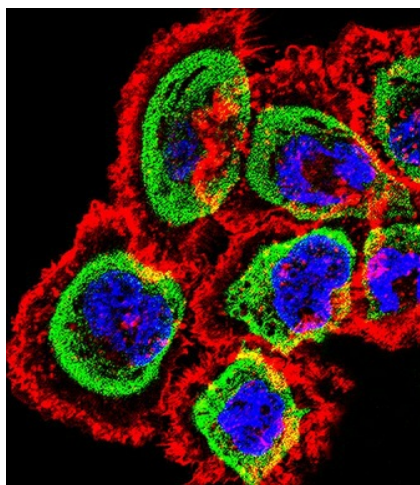
Product images:



RCAN1 Antibody (N-term) (Cat. #TA324606) western blot analysis in 293 cell line lysates (35ug/lane). This demonstrates the RCAN1 antibody detected the RCAN1 protein (arrow).



Western blot analysis of RCAN1 (arrow) using rabbit polyclonal RCAN1 Antibody (N-term) (Cat. #TA324606). 293 cell lysates (2 ug/lane) either nontransfected (Lane 1) or transiently transfected (Lane 2) with the RCAN1 gene.



IF image of A431 cell stained with RCAN1 Antibody (N-term) (Cat#TA324606). A431 cells were incubated with RCAN1 primary antibody (1:25, 1 h at 37°C). For secondary antibody, Alexa Fluor® 488 conjugated donkey anti-rabbit antibody (green) was used (1:400). Cytoplasmic actin was counterstained with Alexa Fluor® 555 (red) conjugated Phalloidin (7 units/ml). Nuclei were counterstained with DAPI (blue). RCAN1 immunoreactivity is localized to Cytoplasm significantly.