

## Product datasheet for **TA324605S**

### RFX1 Rabbit Polyclonal Antibody

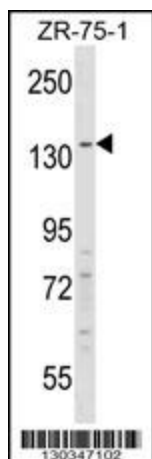
#### Product data:

Product Type:	Primary Antibodies
Applications:	IF, WB
Recommended Dilution:	IF: 1:10~50, WB: 1:1000
Reactivity:	Human (Predicted: Mouse)
Host:	Rabbit
Isotype:	IgG
Clonality:	Polyclonal
Immunogen:	This RFX1 antibody is generated from rabbits immunized with a KLH conjugated synthetic peptide between 896-925 amino acids from the C-terminal region of human RFX1.
Formulation:	Purified polyclonal antibody supplied in PBS with 0.09% (W/V) sodium azide.
Concentration:	lot specific
Purification:	This antibody is purified through a protein A column, followed by peptide affinity purification.
Conjugation:	Unconjugated
Storage:	Store at -20°C as received.
Stability:	Stable for 12 months from date of receipt.
Predicted Protein Size:	104758 Da
Gene Name:	regulatory factor X1
Database Link:	<a href="#">NP_002909</a> <a href="#">Entrez Gene 19724 Mouse</a> <a href="#">Entrez Gene 5989 Human</a> <a href="#">P22670</a>
Synonyms:	EFC; RFX
Protein Families:	Druggable Genome

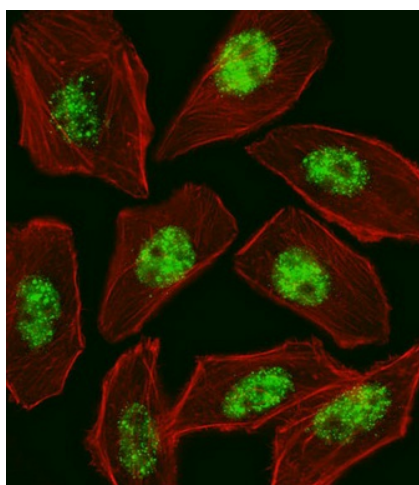


[View online »](#)

## Product images:



RFX1 Antibody (C-term) (Cat. #TA324605S) western blot analysis in ZR-75-1 cell line lysates (35ug/lane). This demonstrates the RFX1 antibody detected the RFX1 protein (arrow).



IF image of U251 cell stained with RFX1 Antibody (C-term) (Cat#TA324605S). U251 cells were incubated with RFX1 primary antibody (1:25, 1 h at 37°C). For secondary antibody, Alexa Fluor® 488 conjugated donkey anti-rabbit antibody (green) was used (1:400). Cytoplasmic actin was counterstained with Alexa Fluor® 555 (red) conjugated Phalloidin (7 units/ml). RFX1 immunoreactivity is localized to Nucleus significantly.