

Product datasheet for **TA324604S**

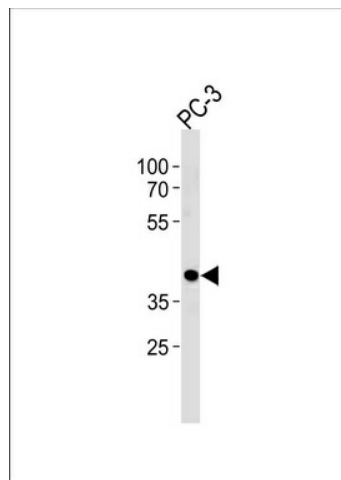
AIBZIP (CREB3L4) Rabbit Polyclonal Antibody

Product data:

Product Type:	Primary Antibodies
Applications:	WB
Recommended Dilution:	WB: 1:1000
Reactivity:	Human
Host:	Rabbit
Isotype:	IgG
Clonality:	Polyclonal
Immunogen:	This CREB3L4 antibody is generated from rabbits immunized with a KLH conjugated synthetic peptide between 338-366 amino acids from the C-terminal region of human CREB3L4.
Formulation:	Purified polyclonal antibody supplied in PBS with 0.09% (W/V) sodium azide.
Concentration:	lot specific
Purification:	This antibody is purified through a protein A column, followed by peptide affinity purification.
Conjugation:	Unconjugated
Storage:	Store at -20°C as received.
Stability:	Stable for 12 months from date of receipt.
Predicted Protein Size:	43432 Da
Gene Name:	cAMP responsive element binding protein 3-like 4
Database Link:	NP_570968 Entrez Gene 148327 Human Q8TEY5
Synonyms:	AIBZIP; ATCE1; CREB3; CREB4; hJAL; JAL
Protein Families:	Transcription Factors
Protein Pathways:	Huntington's disease, Melanogenesis, Prostate cancer



[View online »](#)

Product images:

CREB3L4 Antibody (C-term) (Cat. #[TA324604])
western blot analysis in PC-3 cell line lysates
(35ug/lane). This demonstrates the CREB3L4
antibody detected the CREB3L4 protein (arrow).