

## Product datasheet for **TA324604**

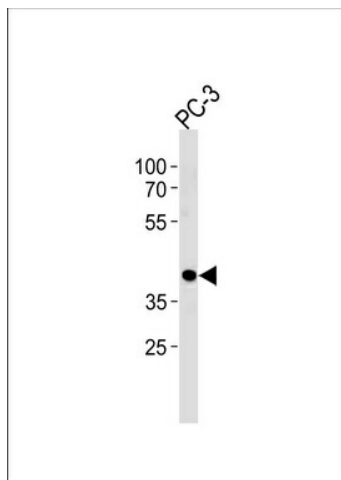
### **AIBZIP (CREB3L4) Rabbit Polyclonal Antibody**

#### **Product data:**

<b>Product Type:</b>	Primary Antibodies
<b>Applications:</b>	WB
<b>Recommended Dilution:</b>	WB: 1:1000
<b>Reactivity:</b>	Human
<b>Host:</b>	Rabbit
<b>Isotype:</b>	IgG
<b>Clonality:</b>	Polyclonal
<b>Immunogen:</b>	This CREB3L4 antibody is generated from rabbits immunized with a KLH conjugated synthetic peptide between 338-366 amino acids from the C-terminal region of human CREB3L4.
<b>Formulation:</b>	Purified polyclonal antibody supplied in PBS with 0.09% (W/V) sodium azide.
<b>Concentration:</b>	lot specific
<b>Purification:</b>	This antibody is purified through a protein A column, followed by peptide affinity purification.
<b>Conjugation:</b>	Unconjugated
<b>Storage:</b>	Store at -20°C as received.
<b>Stability:</b>	Stable for 12 months from date of receipt.
<b>Predicted Protein Size:</b>	43432 Da
<b>Gene Name:</b>	cAMP responsive element binding protein 3-like 4
<b>Database Link:</b>	<a href="#">NP_570968</a> <a href="#">Entrez Gene 148327 Human</a> <a href="#">Q8TEY5</a>
<b>Synonyms:</b>	AIBZIP; ATCE1; CREB3; CREB4; hJAL; JAL
<b>Protein Families:</b>	Transcription Factors
<b>Protein Pathways:</b>	Huntington's disease, Melanogenesis, Prostate cancer



[View online »](#)

**Product images:**

CREB3L4 Antibody (C-term) (Cat. #TA324604) western blot analysis in PC-3 cell line lysates (35ug/lane). This demonstrates the CREB3L4 antibody detected the CREB3L4 protein (arrow).