

Product datasheet for **TA324601**

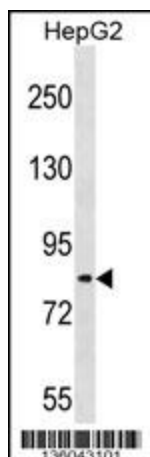
TSC22D2 Rabbit Polyclonal Antibody

Product data:

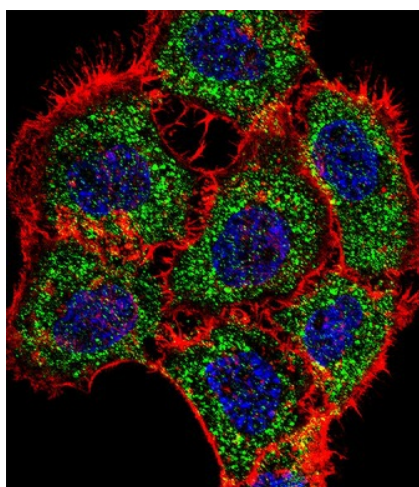
Product Type:	Primary Antibodies
Applications:	IF, WB
Recommended Dilution:	WB: 1:1000, IF: 1:10~50
Reactivity:	Human
Host:	Rabbit
Isotype:	IgG
Clonality:	Polyclonal
Immunogen:	This TSC22D2 antibody is generated from rabbits immunized with a KLH conjugated synthetic peptide between 34-62 amino acids from the N-terminal region of human TSC22D2.
Formulation:	Purified polyclonal antibody supplied in PBS with 0.09% (W/V) sodium azide.
Concentration:	lot specific
Purification:	This antibody is purified through a protein A column, followed by peptide affinity purification.
Conjugation:	Unconjugated
Storage:	Store at -20°C as received.
Stability:	Stable for 12 months from date of receipt.
Predicted Protein Size:	79228 Da
Gene Name:	TSC22 domain family member 2
Database Link:	NP_055594 Entrez Gene 9819 Human O75157
Synonyms:	TILZ4a; TILZ4b; TILZ4c
Protein Families:	Transcription Factors



[View online »](#)

Product images:

TSC22D2 Antibody (N-term) (Cat. #TA324601) western blot analysis in HepG2 cell line lysates (35ug/lane). This demonstrates the TSC22D2 antibody detected the TSC22D2 protein (arrow).



IF image of A431 cell stained with TSC22D2 Antibody (N-term) (Cat#TA324601). A431 cells were incubated with TSC22D2 primary antibody (1:25, 1 h at 37°C). For secondary antibody, Alexa Fluor® 488 conjugated donkey anti-rabbit antibody (green) was used (1:400). Cytoplasmic actin was counterstained with Alexa Fluor® 555 (red) conjugated Phalloidin (7 units/ml). Nuclei were counterstained with DAPI (blue). TSC22D2 immunoreactivity is localized to Cytoplasm significantly.