

Product datasheet for **TA324600**

Islet 2 (ISL2) Rabbit Polyclonal Antibody

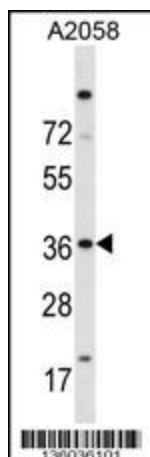
Product data:

Product Type:	Primary Antibodies
Applications:	IF, WB
Recommended Dilution:	IF: 1:10~50, WB: 1:1000
Reactivity:	Human (Predicted: Mouse, Rat)
Host:	Rabbit
Isotype:	IgG
Clonality:	Polyclonal
Immunogen:	This ISL2 antibody is generated from rabbits immunized with a KLH conjugated synthetic peptide between 1-30 amino acids from the N-terminal region of human ISL2.
Formulation:	Purified polyclonal antibody supplied in PBS with 0.09% (W/V) sodium azide.
Concentration:	lot specific
Purification:	This antibody is purified through a protein A column, followed by peptide affinity purification.
Conjugation:	Unconjugated
Storage:	Store at -20°C as received.
Stability:	Stable for 12 months from date of receipt.
Predicted Protein Size:	39768 Da
Gene Name:	ISL LIM homeobox 2
Database Link:	NP_665804 Entrez Gene 57233 Rat Entrez Gene 104360 Mouse Entrez Gene 64843 Human Q96A47
Synonyms:	FLJ10160
Protein Families:	Transcription Factors

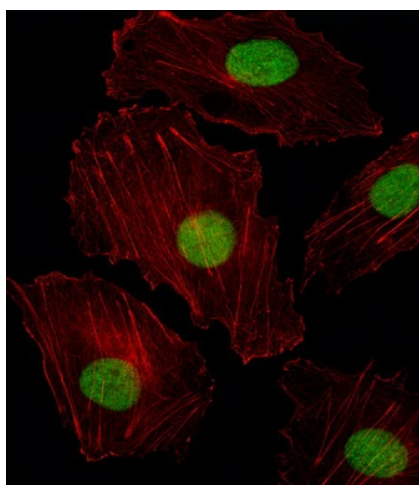


[View online »](#)

Product images:



ISL2 Antibody (N-term) (Cat. #TA324600) western blot analysis in A2058 cell line lysates (35ug/lane). This demonstrates the ISL2 antibody detected the ISL2 protein (arrow).



IF image of HUVEC cell stained with ISL2 Antibody (N-term) (Cat#TA324600). HUVEC cells were incubated with ISL2 primary antibody (1:25, 1 h at 37°C). For secondary antibody, Alexa Fluor® 488 conjugated donkey anti-rabbit antibody (green) was used (1:400). Cytoplasmic actin was counterstained with Alexa Fluor® 555 (red) conjugated Phalloidin (7 units/ml). ISL2 immunoreactivity is localized to Nucleus significantly.