

## Product datasheet for **TA324599**

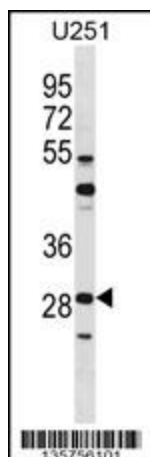
### **FRA2 (FOSL2) Rabbit Polyclonal Antibody**

#### **Product data:**

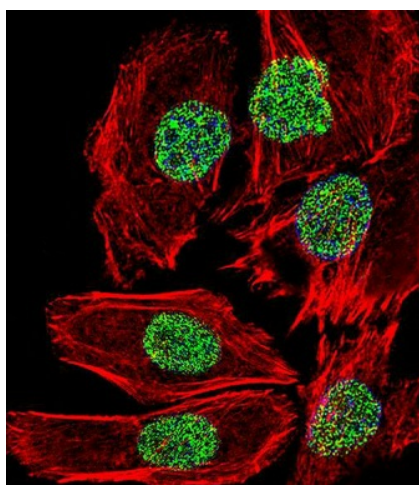
Product Type:	Primary Antibodies
Applications:	IF, WB
Recommended Dilution:	WB: 1:1000, IF: 1:10~50
Reactivity:	Human
Host:	Rabbit
Isotype:	IgG
Clonality:	Polyclonal
Immunogen:	This FOSL2 antibody is generated from rabbits immunized with a KLH conjugated synthetic peptide between 220-248 amino acids from the C-terminal region of human FOSL2.
Formulation:	Purified polyclonal antibody supplied in PBS with 0.09% (W/V) sodium azide.
Concentration:	lot specific
Purification:	This antibody is purified through a protein A column, followed by peptide affinity purification.
Conjugation:	Unconjugated
Storage:	Store at -20°C as received.
Stability:	Stable for 12 months from date of receipt.
Predicted Protein Size:	35193 Da
Gene Name:	FOS like 2, AP-1 transcription factor subunit
Database Link:	<a href="#">NP_005244</a> <a href="#">Entrez Gene 2355 Human</a> <a href="#">P15408</a>
Synonyms:	FRA2
Protein Families:	Druggable Genome, Transcription Factors



[View online »](#)

**Product images:**

FOSL2 Antibody (C-term) (Cat. #TA324599) western blot analysis in U251 cell line lysates (35ug/lane). This demonstrates the FOSL2 antibody detected the FOSL2 protein (arrow).



IF image of A549 cell stained with FOSL2 Antibody (C-term) (Cat#TA324599). A549 cells were incubated with FOSL2 primary antibody (1:25, 1 h at 37°C). For secondary antibody, Alexa Fluor® 488 conjugated donkey anti-rabbit antibody (green) was used (1:400). Cytoplasmic actin was counterstained with Alexa Fluor® 555 (red) conjugated Phalloidin (7 units/ml). Nuclei were counterstained with DAPI (blue). FOSL2 immunoreactivity is localized to Nucleus significantly.