

## Product datasheet for **TA324598S**

### ELK3 Rabbit Polyclonal Antibody

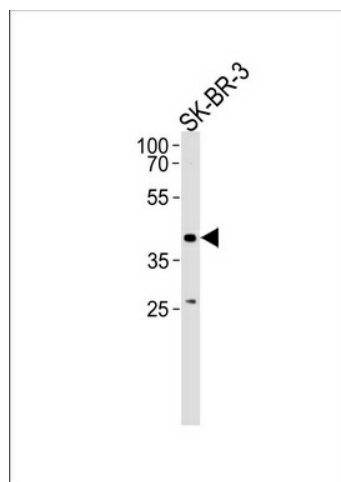
#### Product data:

Product Type:	Primary Antibodies
Applications:	WB
Recommended Dilution:	WB: 1:1000
Reactivity:	Human
Host:	Rabbit
Isotype:	IgG
Clonality:	Polyclonal
Immunogen:	This ELK3 antibody is generated from rabbits immunized with a KLH conjugated synthetic peptide between 98-126 amino acids from the N-terminal region of human ELK3.
Formulation:	Purified polyclonal antibody supplied in PBS with 0.09% (W/V) sodium azide.
Concentration:	lot specific
Purification:	This antibody is purified through a protein A column, followed by peptide affinity purification.
Conjugation:	Unconjugated
Storage:	Store at -20°C as received.
Stability:	Stable for 12 months from date of receipt.
Predicted Protein Size:	44240 Da
Gene Name:	ELK3, ETS transcription factor
Database Link:	<a href="#">NP_005221</a> <a href="#">Entrez Gene 2004 Human P41970</a>
Synonyms:	ERP; NET; SAP-2; SAP2
Protein Families:	Transcription Factors



[View online »](#)

## Product images:



ELK3 Antibody (N-term) (Cat. #[TA324598])  
western blot analysis in SK-BR-3 cell line lysates  
(35ug/lane). This demonstrates the ELK3 antibody  
detected the ELK3 protein (arrow).