

## Product datasheet for **TA324597S**

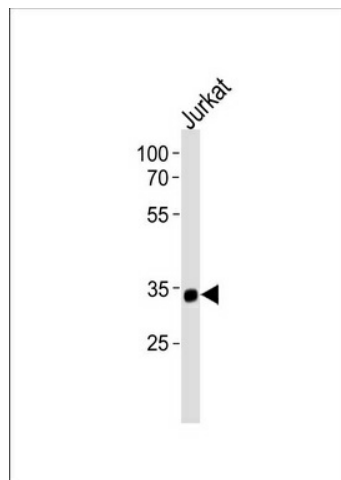
### SNAP45 (SNAPC2) Rabbit Polyclonal Antibody

#### Product data:

Product Type:	Primary Antibodies
Applications:	WB
Recommended Dilution:	WB: 1:1000
Reactivity:	Human
Host:	Rabbit
Isotype:	IgG
Clonality:	Polyclonal
Immunogen:	This SNAPC2 antibody is generated from rabbits immunized with a KLH conjugated synthetic peptide between 278-307 amino acids from the C-terminal region of human SNAPC2.
Formulation:	Purified polyclonal antibody supplied in PBS with 0.09% (W/V) sodium azide.
Concentration:	lot specific
Purification:	This antibody is purified through a protein A column, followed by peptide affinity purification.
Conjugation:	Unconjugated
Storage:	Store at -20°C as received.
Stability:	Stable for 12 months from date of receipt.
Predicted Protein Size:	35556 Da
Gene Name:	small nuclear RNA activating complex polypeptide 2
Database Link:	<a href="#">NP_003074</a> <a href="#">Entrez Gene 6618 Human</a> <a href="#">Q13487</a>
Synonyms:	PTFDELTA; SNAP45
Protein Families:	Transcription Factors



[View online »](#)

**Product images:**


SNAPC2 Antibody (C-term) (Cat. #TA324597]) western blot analysis in Jurkat cell line lysates (35ug/lane). This demonstrates the SNAPC2 antibody detected the SNAPC2 protein (arrow).