

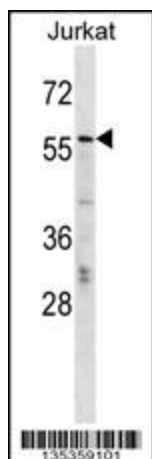
Product datasheet for **TA324594S**

MTGR1 (CBFA2T2) Rabbit Polyclonal Antibody

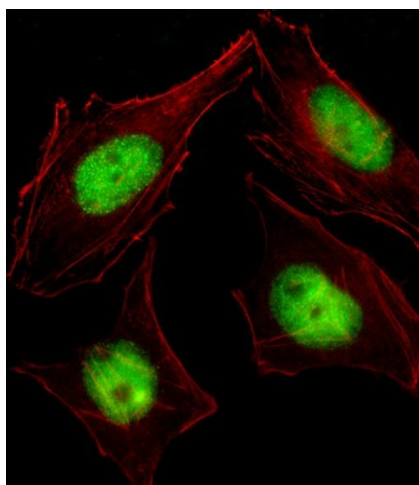
Product data:

Product Type:	Primary Antibodies
Applications:	IF, WB
Recommended Dilution:	IF: 1:10~50, WB: 1:1000
Reactivity:	Human
Host:	Rabbit
Isotype:	IgG
Clonality:	Polyclonal
Immunogen:	This CBFA2T2 antibody is generated from rabbits immunized with a KLH conjugated synthetic peptide between 1-29 amino acids from the N-terminal region of human CBFA2T2.
Formulation:	Purified polyclonal antibody supplied in PBS with 0.09% (W/V) sodium azide.
Concentration:	lot specific
Purification:	This antibody is purified through a protein A column, followed by peptide affinity purification.
Conjugation:	Unconjugated
Storage:	Store at -20°C as received.
Stability:	Stable for 12 months from date of receipt.
Predicted Protein Size:	67133 Da
Gene Name:	CBFA2/RUNX1 translocation partner 2
Database Link:	NP_787060 Entrez Gene 9139 Human O43439
Synonyms:	2; alpha subunit 2; core-binding factor; DKFZp313F2116; EHT; ETO homolog on chromosome 20; MTG8-like protein; MTGR1; myeloid translocation gene-related protein 1; OTTHUMP00000030653; runt domain; translocated to; ZMYND3
Protein Families:	Transcription Factors


[View online »](#)

Product images:


CBFA2T2 Antibody (N-term) (Cat. #TA324594]) western blot analysis in Jurkat cell line lysates (35ug/lane). This demonstrates the CBFA2T2 antibody detected the CBFA2T2 protein (arrow).



IF image of HeLa cell stained with CBFA2T2 Antibody (N-term) (Cat#[TA324594]). HeLa cells were incubated with CBFA2T2 primary antibody (1:25, 1 h at 37°C). For secondary antibody, Alexa Fluor® 488 conjugated donkey anti-rabbit antibody (green) was used (1:400). Cytoplasmic actin was counterstained with Alexa Fluor® 555 (red) conjugated Phalloidin (7 units/ml). CBFA2T2 immunoreactivity is localized to Nucleus significantly.