

## Product datasheet for **TA324592S**

### SOX18 Rabbit Polyclonal Antibody

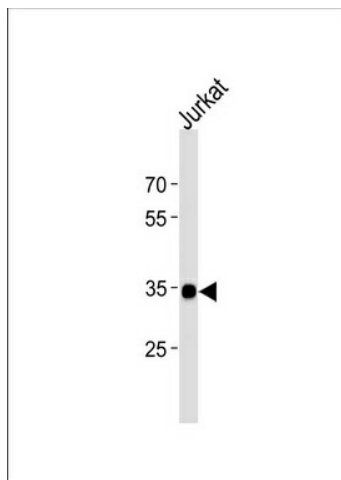
#### Product data:

Product Type:	Primary Antibodies
Applications:	IF, WB
Recommended Dilution:	WB: 1:1000, IF: 1:10~50
Reactivity:	Human
Host:	Rabbit
Isotype:	IgG
Clonality:	Polyclonal
Immunogen:	This SOX18 antibody is generated from rabbits immunized with a KLH conjugated synthetic peptide between 59-88 amino acids from the N-terminal region of human SOX18.
Formulation:	Purified polyclonal antibody supplied in PBS with 0.09% (W/V) sodium azide.
Concentration:	lot specific
Purification:	This antibody is purified through a protein A column, followed by peptide affinity purification.
Conjugation:	Unconjugated
Storage:	Store at -20°C as received.
Stability:	Stable for 12 months from date of receipt.
Predicted Protein Size:	40891 Da
Gene Name:	SRY-box 18
Database Link:	<a href="#">NP_060889</a> <a href="#">Entrez Gene 54345 Human</a> <a href="#">P35713</a>
Synonyms:	HLTRS; HLTS
Protein Families:	Transcription Factors

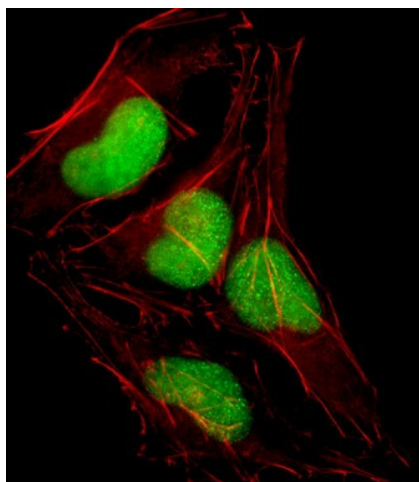


[View online »](#)

## Product images:



SOX18 Antibody (N-term) (Cat. #[TA324592]) western blot analysis in Jurkat cell line lysates (35ug/lane). This demonstrates the SOX18 antibody detected the SOX18 protein (arrow).



IF image of HeLa cell stained with SOX18 Antibody (N-term) (Cat#[TA324592]). HeLa cells were incubated with SOX18 primary antibody (1:25, 1 h at 37°C). For secondary antibody, Alexa Fluor® 488 conjugated donkey anti-rabbit antibody (green) was used (1:400). Cytoplasmic actin was counterstained with Alexa Fluor® 555 (red) conjugated Phalloidin (7 units/ml). Nuclei were counterstained with DAPI (blue). SOX18 immunoreactivity is localized to Nucleus significantly.