

Product datasheet for **TA324591S**

SIX3 Rabbit Polyclonal Antibody

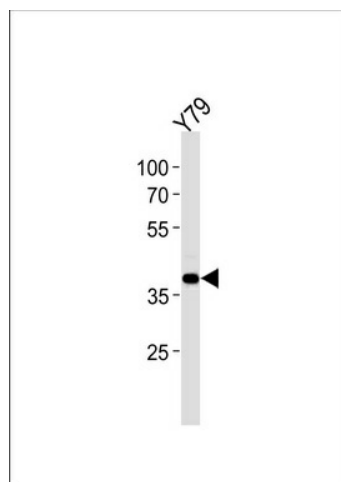
Product data:

Product Type:	Primary Antibodies
Applications:	WB
Recommended Dilution:	WB: 1:1000
Reactivity:	Human (Predicted: Mouse, Chicken)
Host:	Rabbit
Isotype:	IgG
Clonality:	Polyclonal
Immunogen:	This SIX3 antibody is generated from rabbits immunized with a KLH conjugated synthetic peptide between 138-166 amino acids from the Central region of human SIX3.
Formulation:	Purified polyclonal antibody supplied in PBS with 0.09% (W/V) sodium azide.
Concentration:	lot specific
Purification:	This antibody is purified through a protein A column, followed by peptide affinity purification.
Conjugation:	Unconjugated
Storage:	Store at -20°C as received.
Stability:	Stable for 12 months from date of receipt.
Predicted Protein Size:	35487 Da
Gene Name:	SIX homeobox 3
Database Link:	NP_005404 Entrez Gene 20473 Mouse Entrez Gene 6496 Human O95343
Synonyms:	HPE2
Protein Families:	Druggable Genome



[View online »](#)

Product images:



SIX3 Antibody (Center) (Cat. #[TA324591])
western blot analysis in Y79 cell line lysates
(35ug/lane). This demonstrates the SIX3 antibody
detected the SIX3 protein (arrow).