

Product datasheet for **TA324589S**

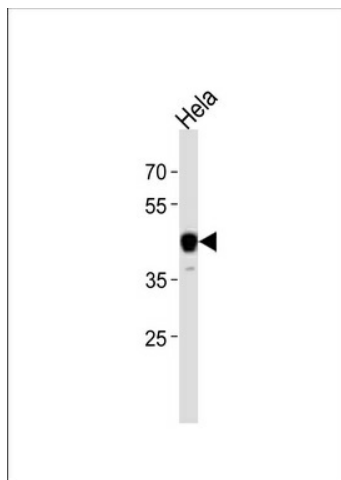
NFIC Rabbit Polyclonal Antibody

Product data:

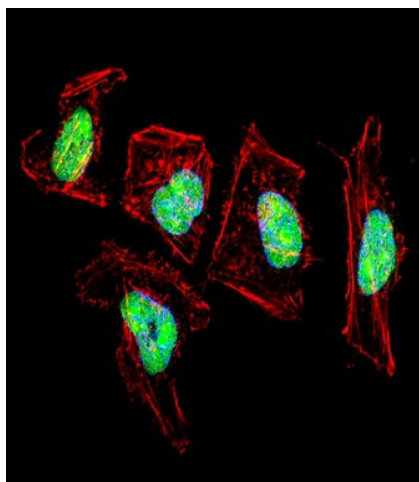
Product Type:	Primary Antibodies
Applications:	IF, WB
Recommended Dilution:	WB: 1:1000, IF: 1:10~50
Reactivity:	Human
Host:	Rabbit
Isotype:	IgG
Clonality:	Polyclonal
Immunogen:	This NFIC antibody is generated from rabbits immunized with a KLH conjugated synthetic peptide between 180-208 amino acids from the Central region of human NFIC.
Formulation:	Purified polyclonal antibody supplied in PBS with 0.09% (W/V) sodium azide.
Concentration:	lot specific
Purification:	This antibody is purified through a protein A column, followed by peptide affinity purification.
Conjugation:	Unconjugated
Storage:	Store at -20°C as received.
Stability:	Stable for 12 months from date of receipt.
Predicted Protein Size:	55675 Da
Gene Name:	nuclear factor I C
Database Link:	NP_995315 Entrez Gene 4782 Human P08651
Synonyms:	CTF; CTF5; NF-I; NFI
Protein Families:	Transcription Factors

[View online »](#)

Product images:



NFIC Antibody (Center) (Cat. #TA324589))
western blot analysis in HeLa cell line lysates
(35ug/lane). This demonstrates the NFIC antibody
detected the NFIC protein (arrow).



IF image of HeLa cell stained with NFIC Antibody
(Center) (Cat#TA324589)). HeLa cells were
incubated with NFIC primary antibody (1:25, 1 h
at 37°C). For secondary antibody, Alexa Fluor®
488 conjugated donkey anti-rabbit antibody
(green) was used (1:400). Cytoplasmic actin was
counterstained with Alexa Fluor® 555 (red)
conjugated Phalloidin (7 units/ml). Nuclei were
counterstained with DAPI (blue). NFIC
immunoreactivity is localized to nucleus
significantly.