

Product datasheet for **TA324588S**

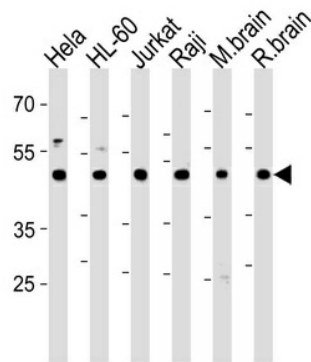
CTBP1 Rabbit Polyclonal Antibody

Product data:

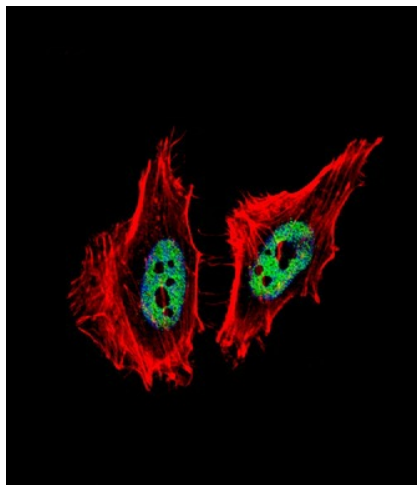
Product Type:	Primary Antibodies
Applications:	IF, WB
Recommended Dilution:	WB: 1:1000, IF: 1:10~50
Reactivity:	Human, Mouse, Rat
Host:	Rabbit
Isotype:	IgG
Clonality:	Polyclonal
Immunogen:	This CTBP1 antibody is generated from rabbits immunized with a KLH conjugated synthetic peptide between 413-440 amino acids from the C-terminal region of human CTBP1.
Formulation:	Purified polyclonal antibody supplied in PBS with 0.09% (W/V) sodium azide.
Concentration:	lot specific
Purification:	This antibody is purified through a protein A column, followed by peptide affinity purification.
Conjugation:	Unconjugated
Storage:	Store at -20°C as received.
Stability:	Stable for 12 months from date of receipt.
Predicted Protein Size:	47535 Da
Gene Name:	C-terminal binding protein 1
Database Link:	NP_001012632 Entrez Gene 13016 Mouse Entrez Gene 29382 Rat Entrez Gene 1487 Human Q13363
Synonyms:	BARS
Protein Pathways:	Chronic myeloid leukemia, Notch signaling pathway, Pathways in cancer, Wnt signaling pathway



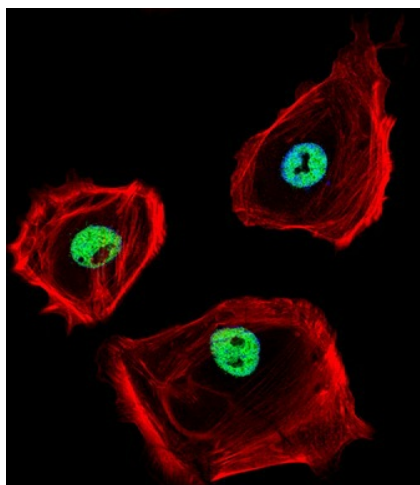
[View online »](#)

Product images:


CTBP1 Antibody (C-term) (Cat. #[TA324588]) western blot analysis in HeLa, HL-60, Jurkat, Raji cell line and mouse brain, rat brain tissue lysates (35ug/lane). This demonstrates the CTBP1 antibody detected the CTBP1 protein (arrow).



IF image of HeLa cell stained with CTBP1 Antibody (C-term) (Cat#[TA324588]). HeLa cells were incubated with CTBP1 primary antibody (1:25, 1 h at 37°C). For secondary antibody, Alexa Fluor® 488 conjugated donkey anti-rabbit antibody (green) was used (1:400). Cytoplasmic actin was counterstained with Alexa Fluor® 555 (red) conjugated Phalloidin (7 units/ml). Nuclei were counterstained with DAPI (blue). CTBP1 immunoreactivity is localized to nucleus significantly.



IF image of SK-BR-3 cell stained with CTBP1 Antibody (C-term) (Cat#[TA324588]). SK-BR-3 cells were incubated with CTBP1 primary antibody (1:25, 1 h at 37°C). For secondary antibody, Alexa Fluor® 488 conjugated donkey anti-rabbit antibody (green) was used (1:400). Cytoplasmic actin was counterstained with Alexa Fluor® 555 (red) conjugated Phalloidin (7 units/ml). Nuclei were counterstained with DAPI (blue). CTBP1 immunoreactivity is localized to nucleus significantly.