

Product datasheet for **TA324586S**

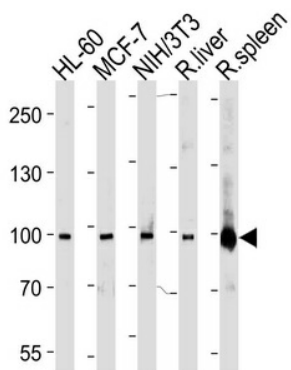
STAT5B Rabbit Polyclonal Antibody

Product data:

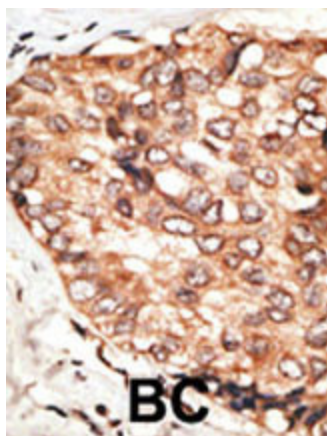
Product Type:	Primary Antibodies
Applications:	IHC, WB
Recommended Dilution:	WB: 1:1000, IHC: 1:50~100
Reactivity:	Human, Mouse, Rat (Predicted: Bovine, Pig)
Host:	Rabbit
Isotype:	IgG
Clonality:	Polyclonal
Immunogen:	This STAT5b antibody is generated from rabbits immunized with a KLH conjugated synthetic peptide between 760-787 amino acids from the C-terminal region of human STAT5b.
Formulation:	Purified polyclonal antibody supplied in PBS with 0.09% (W/V) sodium azide.
Concentration:	lot specific
Purification:	This antibody is prepared by Saturated Ammonium Sulfate (SAS) precipitation followed by dialysis against PBS.
Conjugation:	Unconjugated
Storage:	Store at -20°C as received.
Stability:	Stable for 12 months from date of receipt.
Predicted Protein Size:	89866 Da
Gene Name:	signal transducer and activator of transcription 5B
Database Link:	NP_036580 Entrez Gene 20851 Mouse Entrez Gene 25126 Rat Entrez Gene 6777 Human P51692
Synonyms:	STAT5
Protein Families:	Druggable Genome, ES Cell Differentiation/IPS, Stem cell relevant signaling - JAK/STAT signaling pathway, Transcription Factors
Protein Pathways:	Acute myeloid leukemia, Chemokine signaling pathway, Chronic myeloid leukemia, ErbB signaling pathway, Jak-STAT signaling pathway, Pathways in cancer



[View online »](#)

Product images:

STAT5b Antibody (Cat. #[TA324586]) western blot analysis in HL-60, MCF-7, mouse NIH/3T3 cell line, rat liver and spleen lysates (35ug/lane). This demonstrates the STAT5b antibody detected the STAT5b protein (arrow).



Formalin-fixed and paraffin-embedded human cancer tissue reacted with the primary antibody, which was peroxidase-conjugated to the secondary antibody, followed by DAB staining. This data demonstrates the use of this antibody for immunohistochemistry; clinical relevance has not been evaluated. BC = breast carcinoma; HC = hepatocarcinoma.