

Product datasheet for **TA324583S**

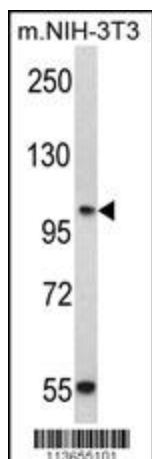
P cadherin (CDH3) Rabbit Polyclonal Antibody

Product data:

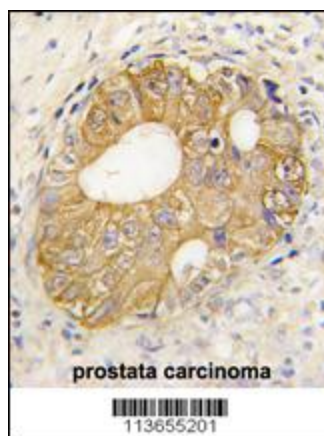
Product Type:	Primary Antibodies
Applications:	FC, IHC, WB
Recommended Dilution:	WB: 1:1000, IHC: 1:10~50, FC: 1:10~50
Reactivity:	Human, Mouse
Host:	Rabbit
Isotype:	IgG
Clonality:	Polyclonal
Immunogen:	This CDH3 antibody is generated from rabbits immunized with a KLH conjugated synthetic peptide between 114-142 amino acids from the N-terminal region of human CDH3.
Formulation:	Purified polyclonal antibody supplied in PBS with 0.09% (W/V) sodium azide.
Concentration:	lot specific
Purification:	This antibody is purified through a protein A column, followed by peptide affinity purification.
Conjugation:	Unconjugated
Storage:	Store at -20°C as received.
Stability:	Stable for 12 months from date of receipt.
Predicted Protein Size:	91418 Da
Gene Name:	cadherin 3
Database Link:	NP_001784 Entrez Gene 12560 Mouse Entrez Gene 1001 Human P22223
Synonyms:	CDHP; HJMD; PCAD
Protein Families:	Druggable Genome, Transmembrane
Protein Pathways:	Cell adhesion molecules (CAMs)


[View online »](#)

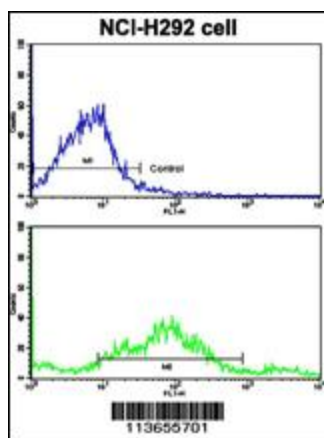
Product images:



Western blot analysis of CDH3 Antibody (N-term) (Cat. #[TA324583]) in NIH-3T3 cell line lysates (35ug/lane). CDH3 (arrow) was detected using the purified Pab.



Formalin-fixed and paraffin-embedded human prostata carcinoma tissue reacted with CDH3 antibody (N-term) (Cat.#[TA324583]), which was peroxidase-conjugated to the secondary antibody, followed by DAB staining. This data demonstrates the use of this antibody for immunohistochemistry; clinical relevance has not been evaluated.



Flow cytometric analysis of NCI-H292 cells using CDH3 Antibody (N-term) (bottom histogram) compared to a negative control cell (top histogram). FITC-conjugated goat-anti-rabbit secondary antibodies were used for the analysis.