

Product datasheet for **TA324580**

NM23A (NME1) Rabbit Polyclonal Antibody

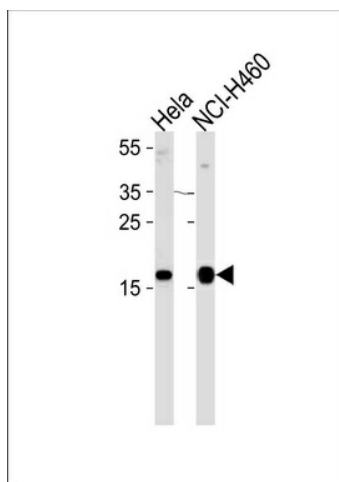
Product data:

Product Type:	Primary Antibodies
Applications:	WB
Recommended Dilution:	WB: 1:1000
Reactivity:	Human (Predicted: Rat)
Host:	Rabbit
Isotype:	IgG
Clonality:	Polyclonal
Immunogen:	This NME1 antibody is generated from rabbits immunized with a KLH conjugated synthetic peptide between 103-131 amino acids from the C-terminal region of human NME1.
Formulation:	Purified polyclonal antibody supplied in PBS with 0.09% (W/V) sodium azide.
Concentration:	lot specific
Purification:	This antibody is purified through a protein A column, followed by peptide affinity purification.
Conjugation:	Unconjugated
Storage:	Store at -20°C as received.
Stability:	Stable for 12 months from date of receipt.
Predicted Protein Size:	17149 Da
Gene Name:	NME/NM23 nucleoside diphosphate kinase 1
Database Link:	NP_000260 Entrez Gene 191575 Rat Entrez Gene 4830 Human P15531
Synonyms:	AWD; GAAD; NB; NBS; NDKA; NDPK-A; NDPKA; NM23; NM23-H1
Protein Families:	Druggable Genome, Stem cell - Pluripotency
Protein Pathways:	Metabolic pathways, Purine metabolism, Pyrimidine metabolism



[View online »](#)

Product images:



NME1 Antibody (C-term) (Cat. #TA324580) western blot analysis in HeLa, NCI-H460 cell line lysates (35ug/lane). This demonstrates the NME1 antibody detected the NME1 protein (arrow).