

## Product datasheet for **TA324579**

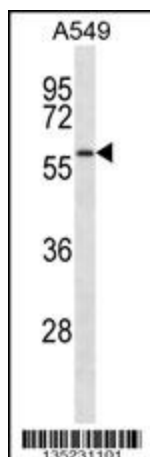
### SMAD9 Rabbit Polyclonal Antibody

#### Product data:

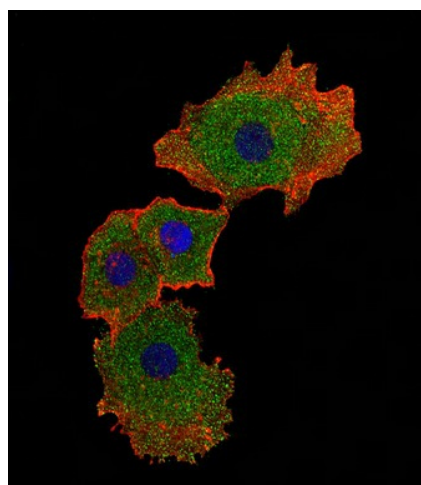
Product Type:	Primary Antibodies
Applications:	IF, WB
Recommended Dilution:	WB: 1:1000, IF: 1:10~50
Reactivity:	Human
Host:	Rabbit
Isotype:	IgG
Clonality:	Polyclonal
Immunogen:	This SMAD9 antibody is generated from rabbits immunized with a KLH conjugated synthetic peptide between 200-228 amino acids from the Central region of human SMAD9.
Formulation:	Purified polyclonal antibody supplied in PBS with 0.09% (W/V) sodium azide.
Concentration:	lot specific
Purification:	This antibody is purified through a protein A column, followed by peptide affinity purification.
Conjugation:	Unconjugated
Storage:	Store at -20°C as received.
Stability:	Stable for 12 months from date of receipt.
Predicted Protein Size:	52493 Da
Gene Name:	SMAD family member 9
Database Link:	<a href="#">NP_005896</a> <a href="#">Entrez Gene 4093 Human</a> <a href="#">Q15198</a>
Synonyms:	MADH6; MADH9; PPH2; SMAD8; SMAD8A; SMAD8B
Protein Families:	ES Cell Differentiation/IPS, Transcription Factors
Protein Pathways:	TGF-beta signaling pathway



[View online »](#)

**Product images:**

SMAD9 Antibody (Center) (Cat. #TA324579) western blot analysis in A549 cell line lysates (35ug/lane). This demonstrates the SMAD9 antibody detected the SMAD9 protein (arrow).



IF image of MCF-7 cell stained with SMAD9 Antibody (Center) (Cat#TA324579). MCF-7 cells were incubated with SMAD9 primary antibody (1:25, 1 h at 37°C). For secondary antibody, Alexa Fluor® 488 conjugated donkey anti-rabbit antibody (green) was used (1:400). Cytoplasmic actin was counterstained with Alexa Fluor® 555 (red) conjugated Phalloidin (7 units/ml). Nuclei were counterstained with DAPI (blue). SMAD9 immunoreactivity is localized to cytoplasm and nucleus significantly.