

## Product datasheet for **TA324578S**

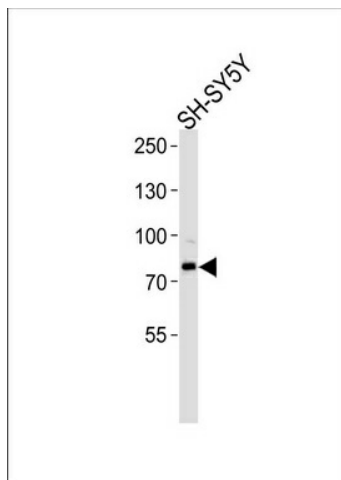
### ORC3L (ORC3) Rabbit Polyclonal Antibody

#### Product data:

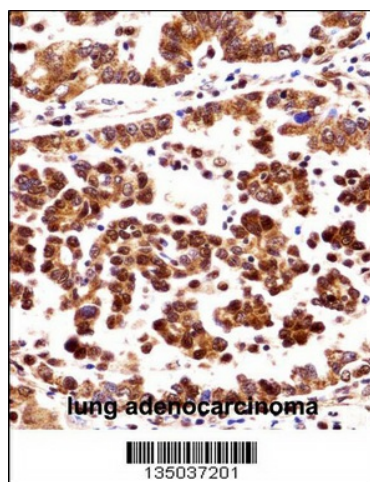
Product Type:	Primary Antibodies
Applications:	IHC, WB
Recommended Dilution:	WB: 1:1000, IHC: 1:10~50
Reactivity:	Human
Host:	Rabbit
Isotype:	IgG
Clonality:	Polyclonal
Immunogen:	This ORC3L antibody is generated from rabbits immunized with a KLH conjugated synthetic peptide between 17-46 amino acids from the N-terminal region of human ORC3L.
Formulation:	Purified polyclonal antibody supplied in PBS with 0.09% (W/V) sodium azide.
Concentration:	lot specific
Purification:	This antibody is purified through a protein A column, followed by peptide affinity purification.
Conjugation:	Unconjugated
Storage:	Store at -20°C as received.
Stability:	Stable for 12 months from date of receipt.
Predicted Protein Size:	82254 Da
Gene Name:	origin recognition complex subunit 3
Database Link:	<a href="#">NP_862820</a> <a href="#">Entrez Gene 23595 Human</a> <a href="#">Q9UBD5</a>
Synonyms:	LAT; LATHEO; ORC3L
Protein Pathways:	Cell cycle



[View online »](#)

**Product images:**


ORC3L Antibody (N-term) (Cat. #TA324578]) western blot analysis in SH-SY5Y cell line lysates (35ug/lane). This demonstrates the ORC3L antibody detected the ORC3L protein (arrow).



ORC3L Antibody (N-term) ([TA324578]) immunohistochemistry analysis in formalin fixed and paraffin embedded human lung adenocarcinoma followed by peroxidase conjugation of the secondary antibody and DAB staining. This data demonstrates the use of ORC3L Antibody (N-term) for immunohistochemistry. Clinical relevance has not been evaluated.