

Product datasheet for **TA324577S**

NANOG Rabbit Polyclonal Antibody

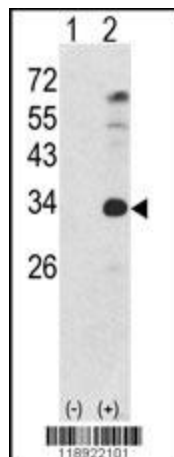
Product data:

Product Type:	Primary Antibodies
Applications:	IF, WB
Recommended Dilution:	WB: 1:1000, IF: 1:10~50
Reactivity:	Human
Host:	Rabbit
Isotype:	IgG
Clonality:	Polyclonal
Immunogen:	This NANOG antibody is generated from rabbits immunized with a KLH conjugated synthetic peptide between 267-292 amino acids from human NANOG.
Formulation:	Purified polyclonal antibody supplied in PBS with 0.09% (W/V) sodium azide.
Concentration:	lot specific
Purification:	This antibody is purified through a protein A column, followed by peptide affinity purification.
Conjugation:	Unconjugated
Storage:	Store at -20°C as received.
Stability:	Stable for 12 months from date of receipt.
Predicted Protein Size:	34620 Da
Gene Name:	Nanog homeobox
Database Link:	NP_079141 Entrez Gene 79923 Human Q9H9S0
Synonyms:	homeobox transcription factor Nanog; homeobox transcription factor Nanog-delta 48; Nanog homeobox
Protein Families:	Cancer stem cells, Embryonic stem cells, ES Cell Differentiation/IPS, Induced pluripotent stem cells, Stem cell - Pluripotency

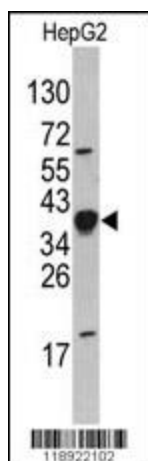


[View online »](#)

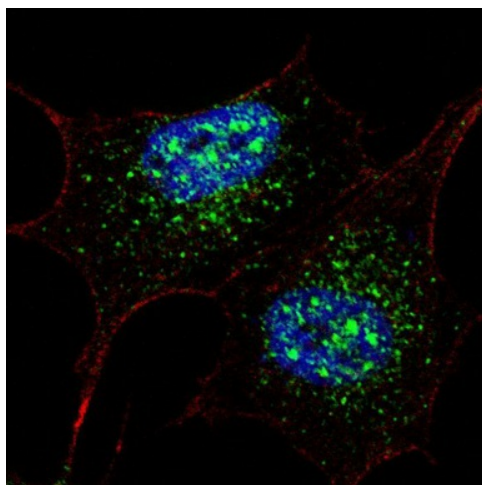
Product images:



Western blot analysis of NANOG (arrow) using rabbit NANOG Antibody (S285) (Cat.# [TA324577]). 293 cell lysates (2 ug/lane) either nontransfected (Lane 1) or transiently transfected with the NANOG gene (Lane 2) (Origene Technologies).



Western blot analysis of NANOG Antibody (S285) (Cat.# [TA324577]) in HepG2 cell line lysates (35ug/lane). NANOG (arrow) was detected using the purified Pab.



IF image of SY5Y cells stained with [TA324577] NANOG (S285) antibody. SY5Y cells were incubated with [TA324577] NANOG (S285) primary antibody (1:200, 2 h at RT). For secondary antibody, Alexa Fluor® 488 conjugated donkey anti-rabbit antibody (green) was used (1:1000, 1h). Cytoplasmic actin was counterstained with Alexa Fluor® 555 (red) conjugated Phalloidin. Nuclei were counterstained with Hoechst 33342 (blue). Nanog immunoreactivity is localized mainly to the nuclei and also to the cytoplasm.