

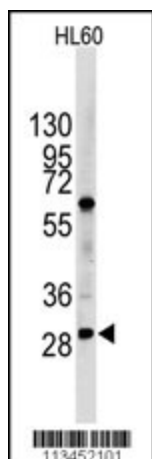
Product datasheet for **TA324574S**

LIN28B Rabbit Polyclonal Antibody

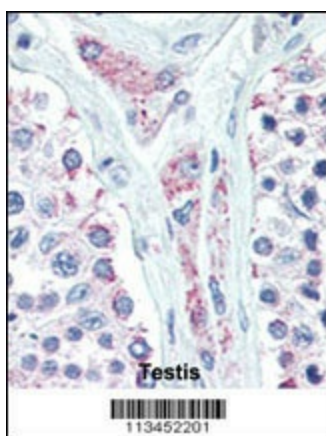
Product data:

Product Type:	Primary Antibodies
Applications:	FC, IF, IHC, WB
Recommended Dilution:	IF: 1:100, WB: 1:1000, IHC: 1:10~50, FC: 1:10~50
Reactivity:	Human
Host:	Rabbit
Isotype:	IgG
Clonality:	Polyclonal
Immunogen:	This LIN28B antibody is generated from rabbits immunized with a KLH conjugated synthetic peptide between 1-30 amino acids from the N-terminal region of human LIN28B.
Formulation:	Purified polyclonal antibody supplied in PBS with 0.09% (W/V) sodium azide.
Concentration:	lot specific
Purification:	This antibody is prepared by Saturated Ammonium Sulfate (SAS) precipitation followed by dialysis against PBS.
Conjugation:	Unconjugated
Storage:	Store at -20°C as received.
Stability:	Stable for 12 months from date of receipt.
Predicted Protein Size:	27084 Da
Gene Name:	lin-28 homolog B
Database Link:	NP_001004317 Entrez Gene 389421 Human Q6ZN17
Synonyms:	CSDD2

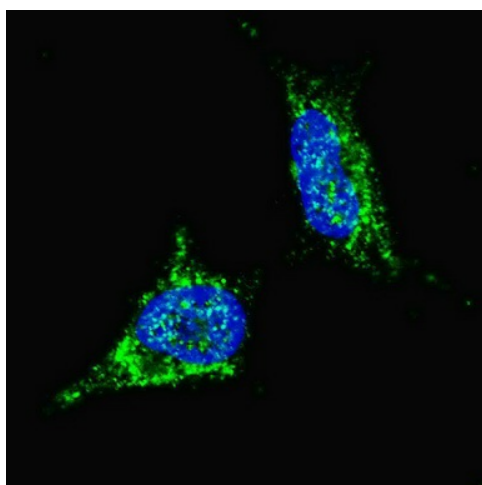
[View online »](#)

Product images:


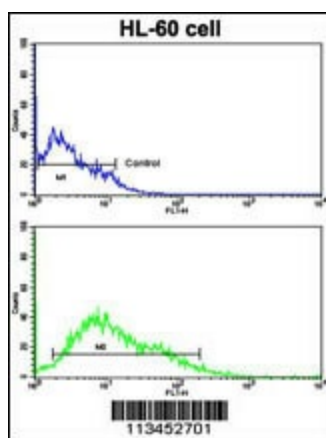
Western blot analysis of LIN28B Antibody (N-term) (Cat.#[TA324574]) in HL60 cell line lysates (35ug/lane). LIN28B (arrow) was detected using the purified Pab.



Formalin-fixed and paraffin-embedded human Testis tissue reacted with LIN28B Antibody (N-term) (Cat.#[TA324574]), which was peroxidase-conjugated to the secondary antibody, followed by AEC staining. This data demonstrates the use of this antibody for immunohistochemistry; clinical relevance has not been evaluated.



IF image of SY5Y cells stained with LIN28B (N-term) antibody. SY5Y cells were incubated with [TA324574] LIN28B (N-term) primary antibody (1:100, 2 h at RT). For secondary antibody, Alexa Fluor® 488 conjugated donkey anti-rabbit antibody (green) was used (1:1000, 1h). Nuclei were counterstained with Hoechst 33342 (blue). Note the highly specific localization of the LIN28B immunosignal to the cytoplasm, supported by Human Protein Atlas Data (<http://www.proteinatlas.org/ENSG00000187772>).



Flow cytometric analysis of HL-60 cells using LIN28B Antibody (N-term) (bottom histogram) compared to a negative control cell (top histogram). FITC-conjugated goat-anti-rabbit secondary antibodies were used for the analysis.