

## Product datasheet for **TA324572S**

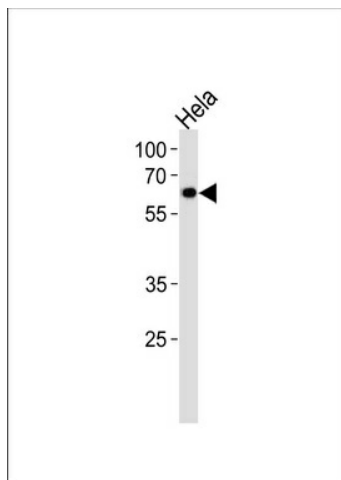
### NR1D2 Rabbit Polyclonal Antibody

#### Product data:

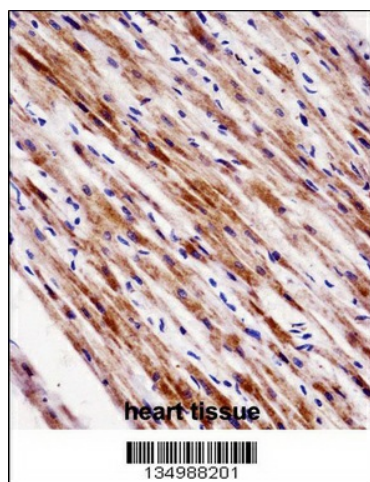
Product Type:	Primary Antibodies
Applications:	IHC, WB
Recommended Dilution:	WB: 1:1000, IHC: 1:10~50
Reactivity:	Human
Host:	Rabbit
Isotype:	IgG
Clonality:	Polyclonal
Immunogen:	This NR1D2 antibody is generated from rabbits immunized with a KLH conjugated synthetic peptide between 266-294 amino acids from the Central region of human NR1D2.
Formulation:	Purified polyclonal antibody supplied in PBS with 0.09% (W/V) sodium azide.
Concentration:	lot specific
Purification:	This antibody is purified through a protein A column, followed by peptide affinity purification.
Conjugation:	Unconjugated
Storage:	Store at -20°C as received.
Stability:	Stable for 12 months from date of receipt.
Predicted Protein Size:	64625 Da
Gene Name:	nuclear receptor subfamily 1 group D member 2
Database Link:	<a href="#">NP_005117</a> <a href="#">Entrez Gene 9975 Human</a> <a href="#">Q14995</a>
Synonyms:	BD73; EAR-1R; RVR
Protein Families:	Druggable Genome, Nuclear Hormone Receptor, Transcription Factors



[View online »](#)

**Product images:**


NR1D2 Antibody (Center) (Cat. #TA324572]) western blot analysis in HeLa cell line lysates (35ug/lane). This demonstrates the NR1D2 antibody detected the NR1D2 protein (arrow).



NR1D2 Antibody (Center) ([TA324572]) immunohistochemistry analysis in formalin fixed and paraffin embedded human heart tissue followed by peroxidase conjugation of the secondary antibody and DAB staining. This data demonstrates the use of NR1D2 Antibody (Center) for immunohistochemistry. Clinical relevance has not been evaluated.