

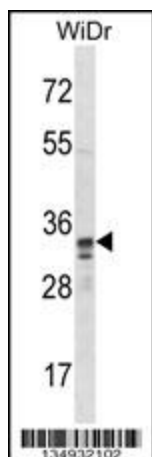
Product datasheet for **TA324571S**

SPI1 Rabbit Polyclonal Antibody

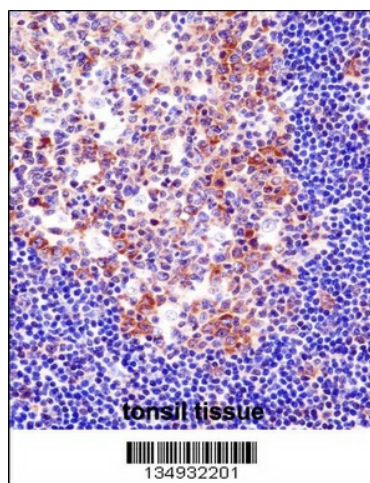
Product data:

Product Type:	Primary Antibodies
Applications:	IF, IHC, WB
Recommended Dilution:	IF: 1:10~50, WB: 1:1000, IHC: 1:10~50
Reactivity:	Human (Predicted: Mouse, Rat, Pig)
Host:	Rabbit
Isotype:	IgG
Clonality:	Polyclonal
Immunogen:	This SPI1 antibody is generated from rabbits immunized with a KLH conjugated synthetic peptide between 217-246 amino acids from the C-terminal region of human SPI1.
Formulation:	Purified polyclonal antibody supplied in PBS with 0.09% (W/V) sodium azide.
Concentration:	lot specific
Purification:	This antibody is purified through a protein A column, followed by peptide affinity purification.
Conjugation:	Unconjugated
Storage:	Store at -20°C as received.
Stability:	Stable for 12 months from date of receipt.
Predicted Protein Size:	31083 Da
Gene Name:	Spi-1 proto-oncogene
Database Link:	NP_001074016 Entrez Gene 20375 Mouse Entrez Gene 366126 Rat Entrez Gene 6688 Human P17947
Synonyms:	OF; PU.1; SFPI1; SPI-1; SPI-A
Protein Families:	Transcription Factors
Protein Pathways:	Acute myeloid leukemia, Pathways in cancer

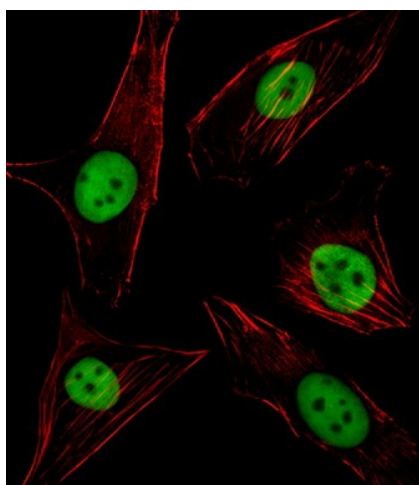

[View online »](#)

Product images:


SPI1 Antibody (C-term) (Cat. #[TA324571])
western blot analysis in WiDr cell line lysates
(35ug/lane). This demonstrates the SPI1 antibody
detected the SPI1 protein (arrow).



SPI1 Antibody (C-term)
([TA324571]) immunohistochemistry analysis in
formalin fixed and paraffin embedded human
tonsil tissue followed by peroxidase conjugation
of the secondary antibody and DAB staining. This
data demonstrates the use of SPI1 Antibody (C-
term) for immunohistochemistry. Clinical
relevance has not been evaluated.



IF image of NIH/3T3 cell stained with SPI1 Antibody (C-term) (Cat# [TA324571]/SA110831AS). NIH/3T3 cells were incubated with SPI1 primary antibody (1:25, 1 h at 37°C). For secondary antibody, Alexa Fluor® 488 conjugated donkey anti-rabbit antibody (green) was used (1:400). Cytoplasmic actin was counterstained with Alexa Fluor® 555 (red) conjugated Phalloidin (7 units/ml). SPI1 immunoreactivity is localized to Nucleus significantly.