

## Product datasheet for **TA324568**

### Alkaline Phosphatase (ALPI) Rabbit Polyclonal Antibody

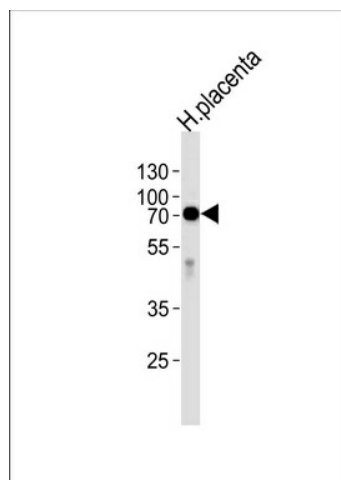
#### Product data:

Product Type:	Primary Antibodies
Applications:	IF, WB
Recommended Dilution:	WB: 1:1000, IF: 1:100
Reactivity:	Human
Host:	Rabbit
Isotype:	IgG
Clonality:	Polyclonal
Immunogen:	This Alkaline Phosphatase (ALPI) antibody is generated from rabbits immunized with a KLH conjugated synthetic peptide between 274-304 amino acids from the Central region of human Alkaline Phosphatase (ALPI).
Formulation:	Purified polyclonal antibody supplied in PBS with 0.09% (W/V) sodium azide.
Concentration:	lot specific
Purification:	This antibody is purified through a protein A column, followed by peptide affinity purification.
Conjugation:	Unconjugated
Storage:	Store at -20°C as received.
Stability:	Stable for 12 months from date of receipt.
Predicted Protein Size:	56812 Da
Gene Name:	alkaline phosphatase, intestinal
Database Link:	<a href="#">NP_001622</a> <a href="#">Entrez Gene 248 Human</a> <a href="#">P09923</a>
Synonyms:	IAP
Protein Families:	Druggable Genome
Protein Pathways:	Folate biosynthesis, Metabolic pathways

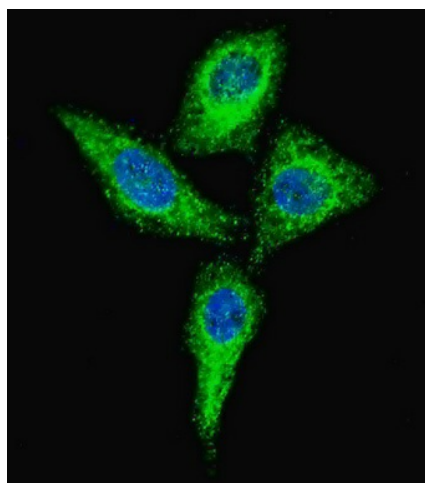


[View online »](#)

## Product images:



Western blot analysis of lysate from human placenta tissue, using ALPI Antibody (Center) (Cat. #TA324568).TA324568 was diluted at 1:1000 at each lane. A goat anti-rabbit IgG H&L (HRP) at 1:5000 dilution was used as the secondary antibody.Lysate at 35ug per lane.



IF image of HeLa cells stained with Alkaline Phosphatase (ALPI) (Center) antibody. HeLa cells were incubated with TA324568 Alkaline Phosphatase (ALPI) (Center) primary antibody (1:100, 2 h at RT). For secondary antibody, Alexa Fluor® 488 conjugated donkey anti-rabbit antibody (green) was used (1:1000, 1h). Nuclei were counterstained with Hoechst 33342 (blue). Alkaline Phosphatase (ALPI) immunoreactivity is localized to the cytoplasm of HeLa cells.