

Product datasheet for **TA324567S**

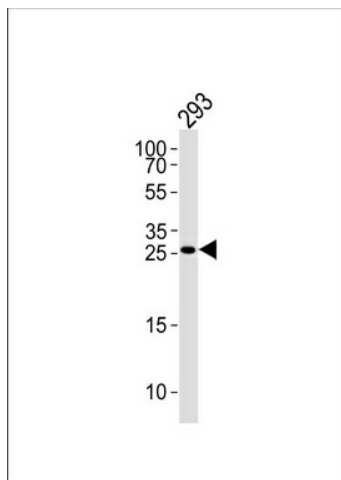
TGF beta induced factor 2 (TGIF2) Rabbit Polyclonal Antibody

Product data:

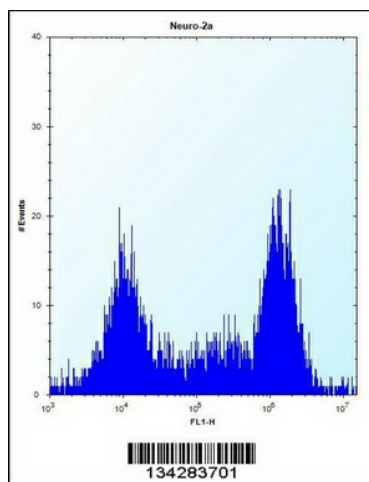
Product Type:	Primary Antibodies
Applications:	FC, WB
Recommended Dilution:	WB: 1:1000, FC: 1:10~50
Reactivity:	Human
Host:	Rabbit
Isotype:	IgG
Clonality:	Polyclonal
Immunogen:	This TGIF2 antibody is generated from rabbits immunized with a KLH conjugated synthetic peptide between 171-199 amino acids from the C-terminal region of human TGIF2.
Formulation:	Purified polyclonal antibody supplied in PBS with 0.09% (W/V) sodium azide.
Concentration:	lot specific
Purification:	This antibody is purified through a protein A column, followed by peptide affinity purification.
Conjugation:	Unconjugated
Storage:	Store at -20°C as received.
Stability:	Stable for 12 months from date of receipt.
Predicted Protein Size:	25878 Da
Gene Name:	TGFB induced factor homeobox 2
Database Link:	NP_068581 Entrez Gene 60436 Human Q9GZN2
Synonyms:	TGFB-induced factor 2; TGFB-induced factor homeobox 2
Protein Families:	Transcription Factors

[View online »](#)

Product images:



TGIF2 Antibody (C-term) (Cat. #TA324567]) western blot analysis in 293 cell line lysates (35ug/lane). This demonstrates the TGIF2 antibody detected the TGIF2 protein (arrow).



TGIF2 Antibody (C-term) (Cat. #TA324567]) flow cytometric analysis of Neuro-2a cells (right histogram) compared to a negative control cell (left histogram). FITC-conjugated donkey-anti-rabbit secondary antibodies were used for the analysis.