

## Product datasheet for **TA324567**

### TGF beta induced factor 2 (TGIF2) Rabbit Polyclonal Antibody

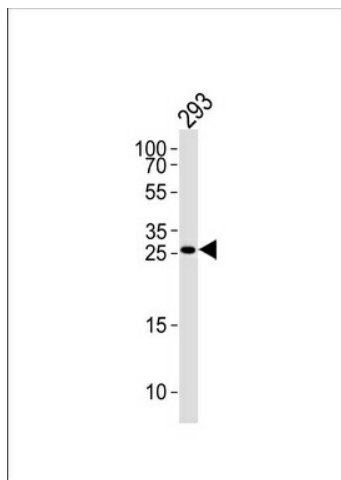
#### Product data:

Product Type:	Primary Antibodies
Applications:	FC, WB
Recommended Dilution:	WB: 1:1000, FC: 1:10~50
Reactivity:	Human
Host:	Rabbit
Isotype:	IgG
Clonality:	Polyclonal
Immunogen:	This TGIF2 antibody is generated from rabbits immunized with a KLH conjugated synthetic peptide between 171-199 amino acids from the C-terminal region of human TGIF2.
Formulation:	Purified polyclonal antibody supplied in PBS with 0.09% (W/V) sodium azide.
Concentration:	lot specific
Purification:	This antibody is purified through a protein A column, followed by peptide affinity purification.
Conjugation:	Unconjugated
Storage:	Store at -20°C as received.
Stability:	Stable for 12 months from date of receipt.
Predicted Protein Size:	25878 Da
Gene Name:	TGFB induced factor homeobox 2
Database Link:	<a href="#">NP_068581</a> <a href="#">Entrez Gene 60436 Human</a> <a href="#">Q9GZN2</a>
Synonyms:	TGFB-induced factor 2; TGFB-induced factor homeobox 2
Protein Families:	Transcription Factors

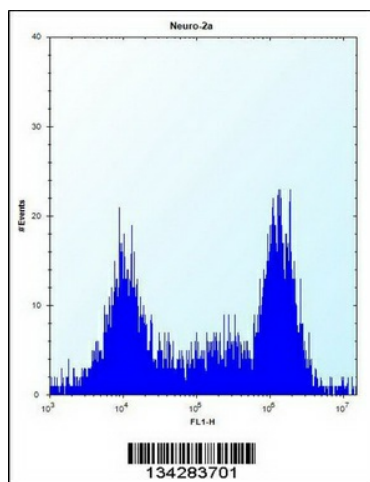


[View online »](#)

## Product images:



TGIF2 Antibody (C-term) (Cat. #TA324567) western blot analysis in 293 cell line lysates (35ug/lane). This demonstrates the TGIF2 antibody detected the TGIF2 protein (arrow).



TGIF2 Antibody (C-term) (Cat. #TA324567) flow cytometric analysis of Neuro-2a cells (right histogram) compared to a negative control cell (left histogram). FITC-conjugated donkey-anti-rabbit secondary antibodies were used for the analysis.