

Product datasheet for TA324566S

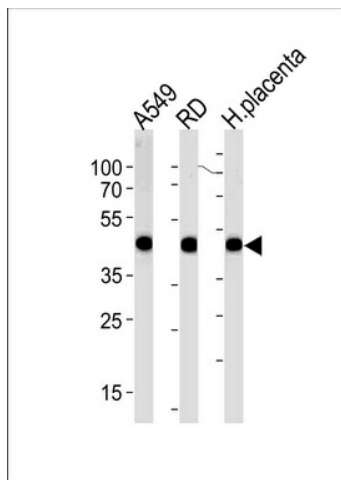
Actin (ACTA1) Rabbit Polyclonal Antibody

Product data:

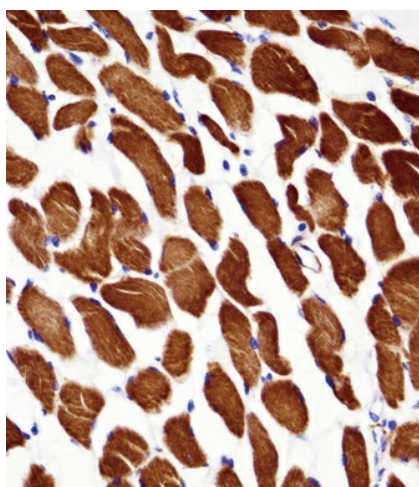
| | |
|-------------------------|------------------------------------------------------------------------------------------------------------------------------------------------------------------------------------------------|
| Product Type: | Primary Antibodies |
| Applications: | FC, IF, IHC, WB |
| Recommended Dilution: | WB: 1:1000, IHC: 1:10~50, IF: 1:10~50, FC: 1:10~50 |
| Reactivity: | Human (Predicted: Mouse, Rat, Bovine, Chicken, Pig, Rabbit, Xenopus) |
| Host: | Rabbit |
| Isotype: | IgG |
| Clonality: | Polyclonal |
| Immunogen: | This ACTA1/Alpha-actin antibody is generated from rabbits immunized with a KLH conjugated synthetic peptide between 346-375 amino acids from the C-terminal region of human ACTA1/Alpha-actin. |
| Formulation: | Purified polyclonal antibody supplied in PBS with 0.09% (W/V) sodium azide. |
| Concentration: | lot specific |
| Purification: | This antibody is purified through a protein A column, followed by peptide affinity purification. |
| Conjugation: | Unconjugated |
| Storage: | Store at -20°C as received. |
| Stability: | Stable for 12 months from date of receipt. |
| Predicted Protein Size: | 42051 Da |
| Gene Name: | actin, alpha 1, skeletal muscle |
| Database Link: | NP_001091 Entrez Gene 11459 Mouse Entrez Gene 29437 Rat Entrez Gene 58 Human P68133 |
| Synonyms: | ACTA; ASMA; CFTD; CFTD1; CFTDM; MPFD; NEM1; NEM2; NEM3; SHPM |
| Protein Families: | Stem cell - Pluripotency |


[View online »](#)

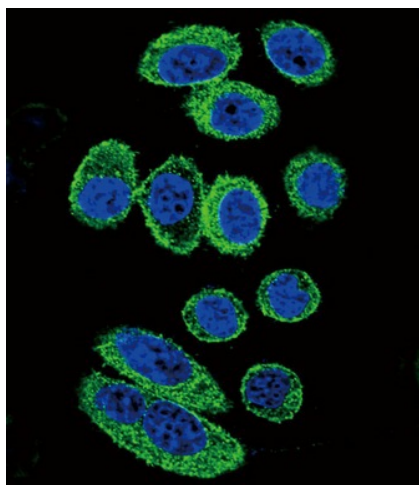
Product images:



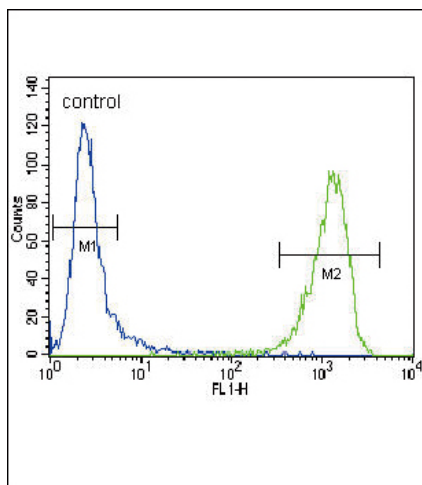
ACTA1/Î±-actin Antibody (C-term) (Cat.# [TA324566]) western blot analysis in A549, RD cell line and human placenta lysates (35ug/lane). This demonstrates the ACTA1/Î±-actin antibody detected the ACTA1/Î±-actin protein (arrow).



ACTA1/Î±-actin Antibody (C-term) ([TA324566]) immunohistochemistry analysis in formalin fixed and paraffin embedded human skeletal muscle followed by peroxidase conjugation of the secondary antibody and DAB staining. This data demonstrates the use of ACTA1/Î±-actin Antibody (C-term) for immunohistochemistry. Clinical relevance has not been evaluated.



Confocal immunofluorescent analysis of ACTA1/±-actin Antibody (C-term) (Cat# [TA324566]) with A549 cell followed by Alexa Fluor 488-conjugated goat anti-rabbit IgG (green). DAPI was used to stain the cell nuclear (blue).



ACTA1/±-actin Antibody (C-term) (Cat. # [TA324566]) flow cytometric analysis of CEM cells (right histogram) compared to a negative control cell (left histogram). FITC-conjugated goat-anti-rabbit secondary antibodies were used for the analysis.