

Product datasheet for **TA324566**

Actin (ACTA1) Rabbit Polyclonal Antibody

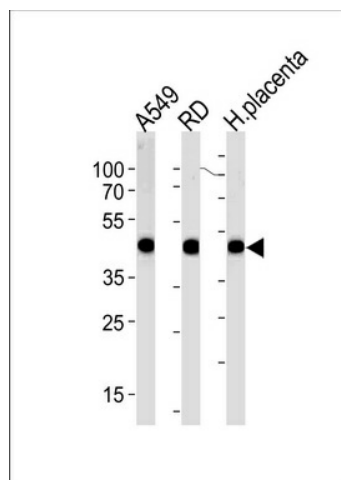
Product data:

Product Type:	Primary Antibodies
Applications:	FC, IF, IHC, WB
Recommended Dilution:	WB: 1:1000, IHC: 1:10~50, IF: 1:10~50, FC: 1:10~50
Reactivity:	Human (Predicted: Mouse, Rat, Bovine, Chicken, Pig, Rabbit, Xenopus)
Host:	Rabbit
Isotype:	IgG
Clonality:	Polyclonal
Immunogen:	This ACTA1/Alpha-actin antibody is generated from rabbits immunized with a KLH conjugated synthetic peptide between 346-375 amino acids from the C-terminal region of human ACTA1/Alpha-actin.
Formulation:	Purified polyclonal antibody supplied in PBS with 0.09% (W/V) sodium azide.
Concentration:	lot specific
Purification:	This antibody is purified through a protein A column, followed by peptide affinity purification.
Conjugation:	Unconjugated
Storage:	Store at -20°C as received.
Stability:	Stable for 12 months from date of receipt.
Predicted Protein Size:	42051 Da
Gene Name:	actin, alpha 1, skeletal muscle
Database Link:	NP_001091 Entrez Gene 11459 Mouse Entrez Gene 29437 Rat Entrez Gene 58 Human P68133
Synonyms:	ACTA; ASMA; CFTD; CFTD1; CFTDM; MPFD; NEM1; NEM2; NEM3; SHPM
Protein Families:	Stem cell - Pluripotency

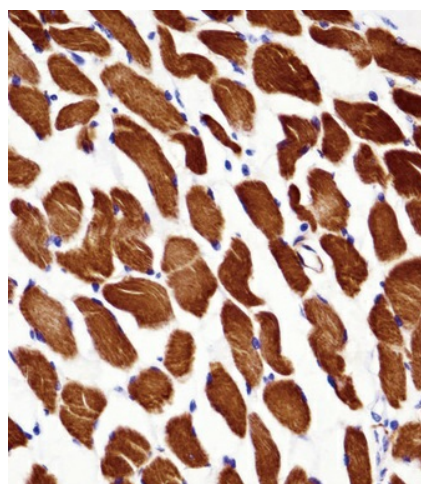


[View online »](#)

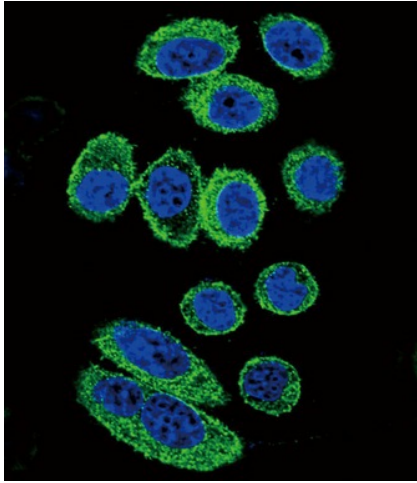
Product images:



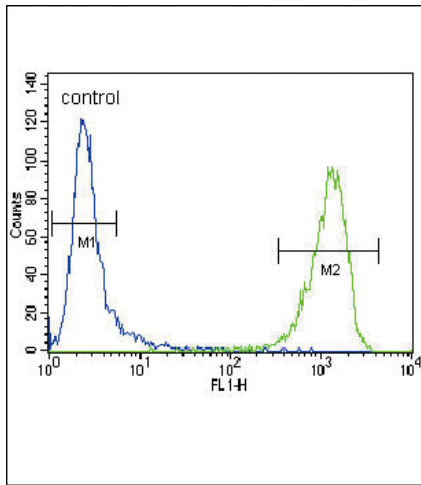
ACTA1/Î±-actin Antibody (C-term) (Cat.# TA324566) western blot analysis in A549, RD cell line and human placenta lysates (35ug/lane). This demonstrates the ACTA1/Î±-actin antibody detected the ACTA1/Î±-actin protein (arrow).



ACTA1/Î±-actin Antibody (C-term) (TA324566) immunohistochemistry analysis in formalin fixed and paraffin embedded human skeletal muscle followed by peroxidase conjugation of the secondary antibody and DAB staining. This data demonstrates the use of ACTA1/Î±-actin Antibody (C-term) for immunohistochemistry. Clinical relevance has not been evaluated.



Confocal immunofluorescent analysis of ACTA1/ β -actin Antibody (C-term) (Cat#TA324566) with A549 cell followed by Alexa Fluor 488-conjugated goat anti-rabbit IgG (green).DAPI was used to stain the cell nuclear (blue).



ACTA1/ β -actin Antibody (C-term) (Cat. #TA324566) flow cytometric analysis of CEM cells (right histogram) compared to a negative control cell (left histogram).FITC-conjugated goat-anti-rabbit secondary antibodies were used for the analysis.