

Product datasheet for **TA324565**

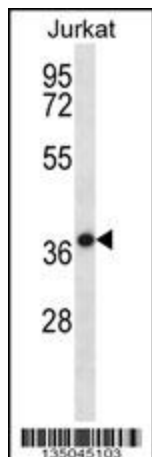
HSPBP1 Rabbit Polyclonal Antibody

Product data:

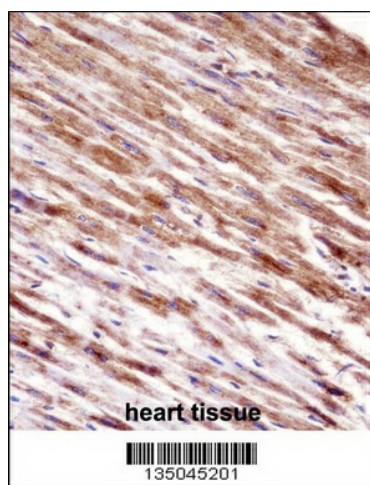
Product Type:	Primary Antibodies
Applications:	IHC, WB
Recommended Dilution:	WB: 1:1000, IHC: 1:10~50
Reactivity:	Human (Predicted: Mouse, Rat, Monkey)
Host:	Rabbit
Isotype:	IgG
Clonality:	Polyclonal
Immunogen:	This HSPBP1 antibody is generated from rabbits immunized with a KLH conjugated synthetic peptide between 69-97 amino acids from the N-terminal region of human HSPBP1.
Formulation:	Purified polyclonal antibody supplied in PBS with 0.09% (W/V) sodium azide.
Concentration:	lot specific
Purification:	This antibody is purified through a protein A column, followed by peptide affinity purification.
Conjugation:	Unconjugated
Storage:	Store at -20°C as received.
Stability:	Stable for 12 months from date of receipt.
Predicted Protein Size:	39474 Da
Gene Name:	HSPA (heat shock 70kDa) binding protein, cytoplasmic cochaperone 1
Database Link:	NP_001123578 Entrez Gene 66245 MouseEntrez Gene 246146 RatEntrez Gene 699908 MonkeyEntrez Gene 23640 Human Q9NZL4
Synonyms:	FES1



[View online »](#)

Product images:

HSPBP1 Antibody (N-term) (Cat. #TA324565) western blot analysis in Jurkat cell line lysates (35ug/lane). This demonstrates the HSPBP1 antibody detected the HSPBP1 protein (arrow).



HSPBP1 Antibody (N-term) (TA324565) immunohistochemistry analysis in formalin fixed and paraffin embedded human heart tissue followed by peroxidase conjugation of the secondary antibody and DAB staining. This data demonstrates the use of HSPBP1 Antibody (N-term) for immunohistochemistry. Clinical relevance has not been evaluated.