

Product datasheet for **TA324564**

TADA3L (TADA3) Rabbit Polyclonal Antibody

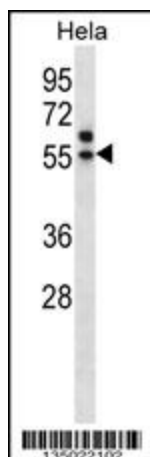
Product data:

Product Type:	Primary Antibodies
Applications:	IF, WB
Recommended Dilution:	WB: 1:1000, IF: 1:10~50
Reactivity:	Human (Predicted: Mouse, Rat, Zebrafish, Bovine, Xenopus)
Host:	Rabbit
Isotype:	IgG
Clonality:	Polyclonal
Immunogen:	This TADA3L antibody is generated from rabbits immunized with a KLH conjugated synthetic peptide between 386-414 amino acids from the C-terminal region of human TADA3L.
Formulation:	Purified polyclonal antibody supplied in PBS with 0.09% (W/V) sodium azide.
Concentration:	lot specific
Purification:	This antibody is purified through a protein A column, followed by peptide affinity purification.
Conjugation:	Unconjugated
Storage:	Store at -20°C as received.
Stability:	Stable for 12 months from date of receipt.
Predicted Protein Size:	48902 Da
Gene Name:	transcriptional adaptor 3
Database Link:	NP_597815 Entrez Gene 101206 Mouse Entrez Gene 362414 Rat Entrez Gene 10474 Human O75528
Synonyms:	ADA3; FLJ20221; FLJ21329; hADA3
Protein Families:	Transcription Factors

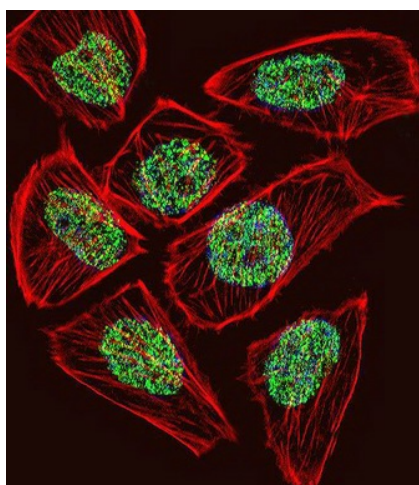


[View online »](#)

Product images:



TADA3L Antibody (C-term) (Cat. #TA324564) western blot analysis in HeLa cell line lysates (35ug/lane). This demonstrates the TADA3L antibody detected the TADA3L protein (arrow).



IF image of U251 cell stained with TADA3L Antibody (C-term) (Cat#TA324564). U251 cells were incubated with TADA3L primary antibody (1:25, 1 h at 37°C). For secondary antibody, Alexa Fluor® 488 conjugated donkey anti-rabbit antibody (green) was used (1:400). Cytoplasmic actin was counterstained with Alexa Fluor® 555 (red) conjugated Phalloidin (7 units/ml). Nuclei were counterstained with DAPI (blue). TADA3L immunoreactivity is localized to Nucleus significantly.