

## Product datasheet for **TA324563S**

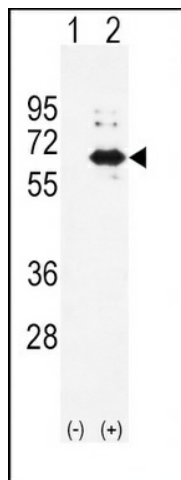
### Alkaline Phosphatase (ALPL) Rabbit Polyclonal Antibody

#### Product data:

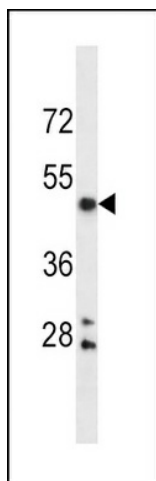
Product Type:	Primary Antibodies
Applications:	FC, IF, IHC, WB
Recommended Dilution:	WB: 1:1000, IF: 1:10~50, FC: 1:10~50, IHC: 1:10~50
Reactivity:	Human, Mouse
Host:	Rabbit
Isotype:	IgG
Clonality:	Polyclonal
Immunogen:	This ALPL antibody is generated from rabbits immunized with a KLH conjugated synthetic peptide between 217-246 amino acids from the Central region of human ALPL.
Formulation:	Purified polyclonal antibody supplied in PBS with 0.09% (W/V) sodium azide.
Concentration:	lot specific
Purification:	This antibody is prepared by Saturated Ammonium Sulfate (SAS) precipitation followed by dialysis against PBS.
Conjugation:	Unconjugated
Storage:	Store at -20°C as received.
Stability:	Stable for 12 months from date of receipt.
Predicted Protein Size:	57305 Da
Gene Name:	alkaline phosphatase, liver/bone/kidney
Database Link:	<a href="#">NP_000469</a> <a href="#">Entrez Gene 11647 Mouse</a> <a href="#">Entrez Gene 249 Human</a> <a href="#">P05186</a>
Synonyms:	AP-TNAP; APTNAP; HOPS; TNAP; TNSALP
Protein Families:	Druggable Genome
Protein Pathways:	Folate biosynthesis, Metabolic pathways



[View online »](#)

**Product images:**


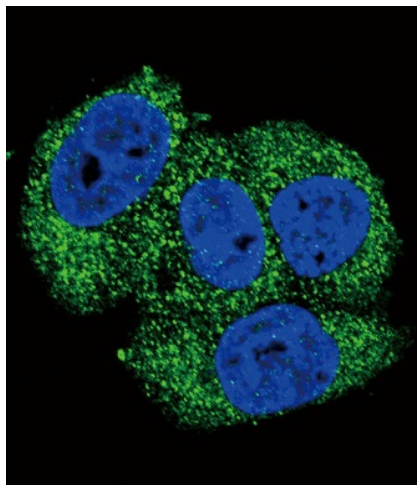
Western blot analysis of ALPL (arrow) using rabbit polyclonal ALPL Antibody (Center) (Cat.# [TA324563]). 293 cell lysates (2 ug/lane) either nontransfected (Lane 1) or transiently transfected (Lane 2) with the ALPL gene.



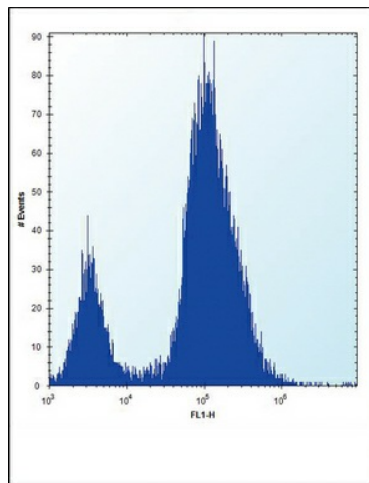
ALPL Antibody (Center) (Cat.#[TA324563]) western blot analysis in mouse brain tissue lysates (35ug/lane).This demonstrates the ALPL antibody detected the ALPL protein (arrow).



ALPL Antibody (Center) (Cat. # [TA324563]) immunohistochemistry analysis in formalin fixed and paraffin embedded human kidney tissue followed by peroxidase conjugation of the secondary antibody and DAB staining. This data demonstrates the use of ALPL Antibody (Center) for immunohistochemistry. Clinical relevance has not been evaluated.



Confocal immunofluorescent analysis of ALPL Antibody (Center) (Cat#[TA324563]) with MCF-7 cell followed by Alexa Fluor 488-conjugated goat anti-rabbit IgG (green). DAPI was used to stain the cell nuclear (blue).



ALPL Antibody (Center) (Cat. #[TA324563]) flow cytometric analysis of 293 cells (right histogram) compared to a negative control cell (left histogram). FITC-conjugated goat-anti-rabbit secondary antibodies were used for the analysis.