

Product datasheet for **TA324561**

TAF7 Rabbit Polyclonal Antibody

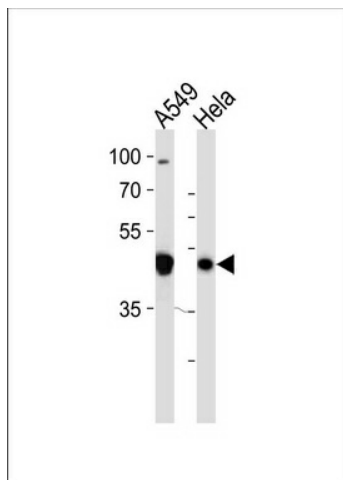
Product data:

Product Type:	Primary Antibodies
Applications:	WB
Recommended Dilution:	WB: 1:1000
Reactivity:	Human (Predicted: Mouse, Bovine, Hamster, Monkey)
Host:	Rabbit
Isotype:	IgG
Clonality:	Polyclonal
Immunogen:	This TAF7 antibody is generated from rabbits immunized with a KLH conjugated synthetic peptide between 308-337 amino acids from the C-terminal region of human TAF7.
Formulation:	Purified polyclonal antibody supplied in PBS with 0.09% (W/V) sodium azide.
Concentration:	lot specific
Purification:	This antibody is purified through a protein A column, followed by peptide affinity purification.
Conjugation:	Unconjugated
Storage:	Store at -20°C as received.
Stability:	Stable for 12 months from date of receipt.
Predicted Protein Size:	40259 Da
Gene Name:	TATA-box binding protein associated factor 7
Database Link:	NP_005633 Entrez Gene 24074 Mouse Entrez Gene 574347 Monkey Entrez Gene 6879 Human Q15545
Synonyms:	TAF2F; TAFII55
Protein Families:	Transcription Factors
Protein Pathways:	Basal transcription factors



[View online »](#)

Product images:



TAF7 Antibody (C-term) (Cat. #TA324561) western blot analysis in A549, HeLa cell line lysates (35ug/lane). This demonstrates the TAF7 antibody detected the TAF7 protein (arrow).