

Product datasheet for **TA324560S**

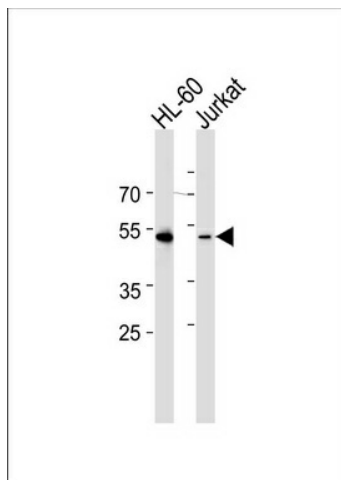
RUNX3 Rabbit Polyclonal Antibody

Product data:

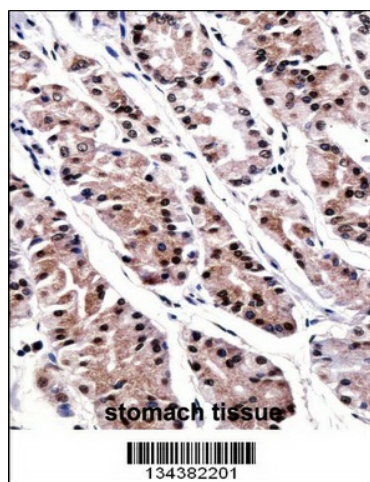
Product Type:	Primary Antibodies
Applications:	IF, IHC, WB
Recommended Dilution:	WB: 1:1000, IHC: 1:10~50, IF: 1:10~50
Reactivity:	Human
Host:	Rabbit
Isotype:	IgG
Clonality:	Polyclonal
Immunogen:	This RUNX3 antibody is generated from rabbits immunized with a KLH conjugated synthetic peptide between 168-197 amino acids from the Central region of human RUNX3.
Formulation:	Purified polyclonal antibody supplied in PBS with 0.09% (W/V) sodium azide.
Concentration:	lot specific
Purification:	This antibody is purified through a protein A column, followed by peptide affinity purification.
Conjugation:	Unconjugated
Storage:	Store at -20°C as received.
Stability:	Stable for 12 months from date of receipt.
Predicted Protein Size:	44356 Da
Gene Name:	runt related transcription factor 3
Database Link:	NP_001026850 Entrez Gene 864 Human Q13761
Synonyms:	AML2; CBFA3; PEBP2aC
Protein Families:	Transcription Factors



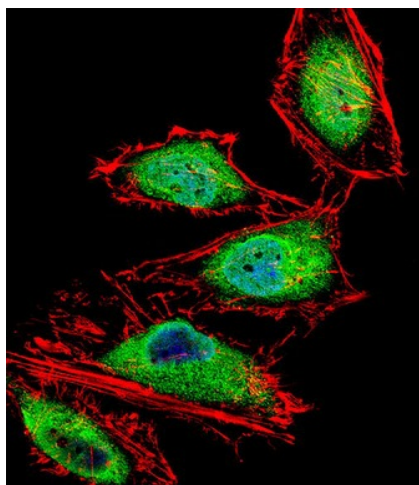
[View online »](#)

Product images:


Western blot analysis of lysates from HL-60, Jurkat cell line (from left to right), using RUNX3 Antibody (Center) (Cat. #TA324560S). [TA324560S] was diluted at 1:1000 at each lane. A goat anti-rabbit IgG H&L (HRP) at 1:5000 dilution was used as the secondary antibody. Lysates at 35ug per lane.



RUNX3 Antibody (Center) ([TA324560S]) immunohistochemistry analysis in formalin fixed and paraffin embedded human stomach tissue followed by peroxidase conjugation of the secondary antibody and DAB staining. This data demonstrates the use of RUNX3 Antibody (Center) for immunohistochemistry. Clinical relevance has not been evaluated.



IF image of HeLa cell stained with RUNX3 Antibody (Center) (Cat#[TA324560]). HeLa cells were incubated with RUNX3 primary antibody (1:25, 1 h at 37°C). For secondary antibody, Alexa Fluor® 488 conjugated donkey anti-rabbit antibody (green) was used (1:400). Cytoplasmic actin was counterstained with Alexa Fluor® 555 (red) conjugated Phalloidin (7 units/ml). Nuclei were counterstained with DAPI (blue). RUNX3 immunoreactivity is localized to Nucleus and Cytoplasm significantly.