

## Product datasheet for **TA324559S**

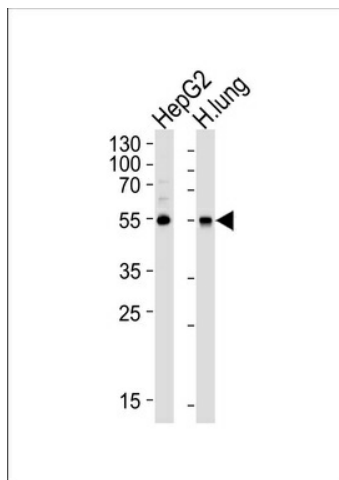
### ALDH1A1 Rabbit Polyclonal Antibody

#### Product data:

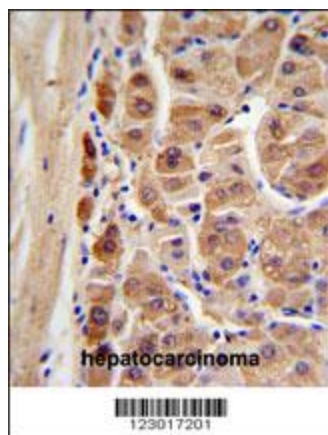
Product Type:	Primary Antibodies
Applications:	FC, IF, IHC, WB
Recommended Dilution:	WB: 1:1000, IF: 1:100, IHC: 1:50~100, FC: 1:10~50
Reactivity:	Human
Host:	Rabbit
Isotype:	IgG
Clonality:	Polyclonal
Immunogen:	This ALDH1A1 antibody is generated from rabbits immunized with human ALDH1A1 recombinant protein.
Formulation:	Purified polyclonal antibody supplied in PBS with 0.09% (W/V) sodium azide.
Concentration:	lot specific
Purification:	This antibody is purified through a protein A column, followed by peptide affinity purification.
Conjugation:	Unconjugated
Storage:	Store at -20°C as received.
Stability:	Stable for 12 months from date of receipt.
Predicted Protein Size:	54862 Da
Gene Name:	aldehyde dehydrogenase 1 family member A1
Database Link:	<a href="#">NP_000680</a> <a href="#">Entrez Gene 216 Human</a> <a href="#">P00352</a>
Synonyms:	ALDC; ALDH-E1; ALDH1; ALDH11; HEL-9; HEL-S-53e; HEL12; PUMB1; RALDH1
Protein Families:	Druggable Genome, ES Cell Differentiation/IPS
Protein Pathways:	Metabolic pathways, Retinol metabolism



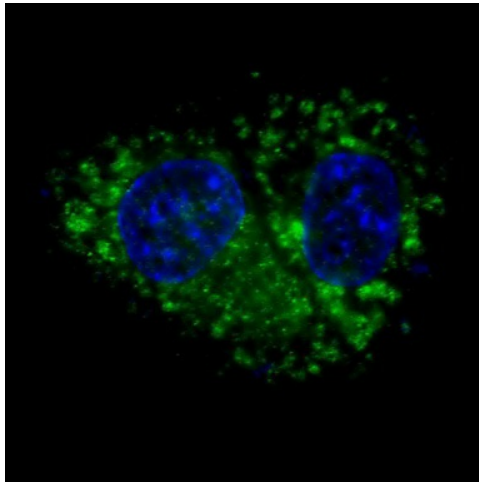
[View online »](#)

**Product images:**

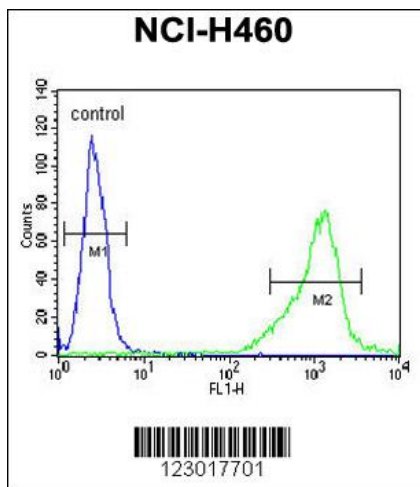
Western blot analysis of lysates from HepG2 cell line and human lung tissue lysate (from left to right), using ALDH1A1 Antibody (Cat. # [TA324559]). [TA324559] was diluted at 1:1000 at each lane. A goat anti-rabbit IgG H&L (HRP) at 1:5000 dilution was used as the secondary antibody. Lysates at 35ug per lane.



ALDH1A1 Antibody (Cat. # [TA324559]) IHC analysis in formalin fixed and paraffin embedded human hepatocarcinoma followed by peroxidase conjugation of the secondary antibody and DAB staining. This data demonstrates the use of the ALDH1A1 Antibody for immunohistochemistry. Clinical relevance has not been evaluated.



IF image of HepG2 cells stained with ALDH1A1 antibody. HepG2 cells were incubated with [TA324559] ALDH1A1 primary antibody (1:100, 2 h at RT). For secondary antibody, Alexa Fluor® 488 conjugated donkey anti-rabbit antibody (green) was used (1:1000, 1h). Nuclei were counterstained with Hoechst 33342 (blue). ALDH1A1 immunoreactivity is localized to the cytoplasm of HepG2 cells.



ALDH1A1 Antibody (Cat. #[TA324559]) flow cytometric analysis of NCI-H460 cells (right histogram) compared to a negative control cell (left histogram). FITC-conjugated goat-anti-rabbit secondary antibodies were used for the analysis.