

## Product datasheet for **TA324558S**

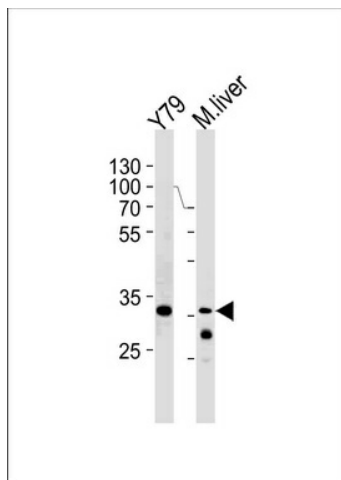
### DBPA (YBX3) Rabbit Polyclonal Antibody

#### Product data:

Product Type:	Primary Antibodies
Applications:	WB
Recommended Dilution:	WB: 1:1000
Reactivity:	Human, Mouse (Predicted: Rat)
Host:	Rabbit
Isotype:	IgG
Clonality:	Polyclonal
Immunogen:	This CSDA antibody is generated from rabbits immunized with a KLH conjugated synthetic peptide between 152-181 amino acids from the Central region of human CSDA.
Formulation:	Purified polyclonal antibody supplied in PBS with 0.09% (W/V) sodium azide.
Concentration:	lot specific
Purification:	This antibody is purified through a protein A column, followed by peptide affinity purification.
Conjugation:	Unconjugated
Storage:	Store at -20°C as received.
Stability:	Stable for 12 months from date of receipt.
Predicted Protein Size:	40090 Da
Gene Name:	Y-box binding protein 3
Database Link:	<a href="#">NP_003642</a> <a href="#">Entrez Gene 56449 Mouse</a> <a href="#">Entrez Gene 83807 Rat</a> <a href="#">Entrez Gene 8531 Human</a> <a href="#">P16989</a>
Synonyms:	CSDA; CSDA1; DBPA; ZONAB
Protein Families:	Transcription Factors
Protein Pathways:	Tight junction



[View online »](#)

**Product images:**

CSDA Antibody (Center) (Cat.# [TA324558])  
western blot analysis in Y79 cell line and mouse  
liver lysates (35ug/lane). This demonstrates the  
CSDA antibody detected the CSDA protein  
(arrow).